



City of Bellevue

Bellevue Grand Connection: I-405 Crossing – Downtown to Eastrail

Design Charette Summary

February 09, 2024

Project overview

To continue to meet Bellevue's transportation needs, the City of Bellevue developed the Grand Connection program—a series of projects and initiatives designed to improve the experience for people walking from Meydenbauer Bay Park through downtown Bellevue across Interstate 405 (I-405) to Eastrail. The city is developing preliminary design plans for the Bellevue Grand Connection: I-405 Crossing – Downtown to Eastrail (Grand Connection Crossing) to improve the experience for people walking and rolling and support growth and continued development in the project area.

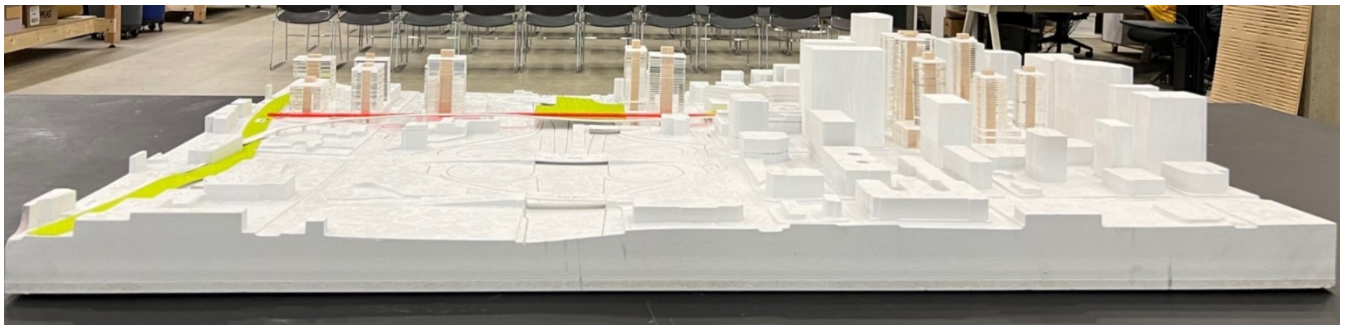


Figure 1: City architectural model to scale of the project area that attendees used to visualize what the Grand Connection Crossing encompasses during discussions.

The city's design charette was made up of internal city stakeholders and business partners, where they shared insight about their aspirations and visions of the connection to the project design team. The charette helped the project design team clarify priorities and set expectations of what is technically feasible within the project area to internal city stakeholders and business partners.

Meeting details

The project team facilitated the charrette on Monday, December 4, 2023, from 10 a.m. to 12 p.m. This hybrid meeting was held both in-person at LMN's studio and virtually on Teams, using the Miro engagement tool.

Attendees

The following participants represented a variety of city departments, internal stakeholders and potential partners committed for engagement and advancement of the Grand Connection Crossing Project:

- Patrick Bannon, *Bellevue Downtown Association*
- Aditi Mukherji, *City of Bellevue*
- Andrea Tonc, *City of Bellevue*
- Anthony Gill, *City of Bellevue*
- Briana Vogler, *City of Bellevue*
- Doug Vogt, *City of Bellevue*
- Elizabeth Stead, *City of Bellevue*
- Emil A. King, *City of Bellevue*
- Franz Loewenherz, *City of Bellevue*
- Gillian Hagstrom, *City of Bellevue*
- Hillary Stibbard, *City of Bellevue*
- Isack Habte, *City of Bellevue*
- Janet Shull, *City of Bellevue*
- Jeremy Chin, *City of Bellevue*
- Jesse Canedo, *City of Bellevue*
- Jon P. Warren, *City of Bellevue*
- Jonathan Winslow, *City of Bellevue*
- Jun Suk An, *City of Bellevue*
- Justin Panganiban, *City of Bellevue*
- Katie Halse, *City of Bellevue*
- Kyle Potuzak, *City of Bellevue*
- Loren Matlick, *City of Bellevue*
- Merryn Hearn, *City of Bellevue*
- Mia Waters, *City of Bellevue*
- Riley MacPhee, *City of Bellevue*
- Ryan Walker, *City of Bellevue*
- Tatsuyuki Komada, *City of Bellevue*
- Thomas Conway, *City of Bellevue*
- Tim Kariel, *City of Bellevue*
- Tyler Moore, *City of Bellevue*
- Casiano Atienza, *City of Bellevue*
- Katherine Hollis, *East Rail Partners*
- Stacy Graven, *Friends of Grand Connection*
- Andrew Coates, *KGIP*
- Scott Holbrook, *KGIP*
- Steve Kramer, *KGIP*
- Curt Warber, *King County*
- Walter Scott, *Legacy Commercial*
- Adam Amrhein, *LMN Architects*
- Schuyler McAuliffe, *LMN Architects*
- Stephen Van Dyck, *LMN Architects*
- Tim Carr, *Meydenbauer Center*
- Natalie Quick, *Natalie Quick Consulting*
- Tara Green, *OJB*
- Jereck Boss, *OJB*
- Cameron Rouze, *OJB*
- Laura LaBissoniere Miller, *PRR*
- Ian Kell, *Seneca Group*
- Mark Epstein, *Sound Transit*
- Jenkins Chan, *SU Development*
- Barrett Hanson, *WSDOT*
- Jeanne Acutanza, *WSP*
- Justin Clark, *WSP*
- Lorelei A. Williams, *WSP*
- Matthew Barber, *WSP*
- Jamie Strausz-Clark, *3Si*
- Drew Hill



Figure 2: In person attendees arriving for overview presentation.



Meeting Overview

Lorelei Williams, WSP Consultant Team Project Manager, welcomed participants and reviewed the meeting agenda. Jesse Canedo, City of Bellevue Chief Economic Development Officer, reviewed the Grand Connection program background and vision. Jun Suk An, Grand Connection Crossing Project Manager, introduced the project and gave an overview of work happening during preliminary design. Adam Amrhein, LMN Architects, shared early inspiration images before returning to Lorelei to review the meeting objectives. Jereck Boss, LMN studios, introduced the Miro tool and provided a brief tutorial.

Participants were then divided into three breakout groups for facilitated discussions. Each breakout group focused on key topics: place and design; people and connections; and economic and community development. Each group had the common goal of building a collective vision for the project team to use to develop design alternatives.



Figure 3: Jun Suk An, Grand Connection Crossing Project Manager, introduced the project and gave an overview of preliminary design.

Breakout group discussion summary

The project team framed the small group discussions by sharing their expectation with participants:

- We want to understand and build the collective visions that we can use to develop the design alternatives
- No decisions will be made today
- We don't know enough yet to get into detailed design ideas
- We do not have enough info to tell you definitively what is not possible or certain, but we will have that as we develop our design alternatives
- The Miro Boards will stay open until the end of the day 12/18
- We will culminate the understandings gained and post a summary

With these expectations framing the conversation, breakout group participants showed enthusiasm and ingenuity for the possibilities of the Bellevue Grand Connection crossing. A common sentiment that participants shared was the potential of this crossing to serve as a public art space in various forms and how it could provide an economic benefit to local artists in addition to beautification.

Additionally, participants focused on the transformative benefit to active transportation opportunities, emphasizing the need for the space to feel inviting and easy to use for people of all ages, backgrounds and abilities. Although participants shared many ideas for how the crossing could serve the city's economic interests, they shared as well that the crossing should be a free experience. In particular, they shared the crossing should be free from the pressure to purchase anything, and that it should allow for easy rest and enjoyment of Bellevue's natural environment and rich diversity in arts and culture.

People and Connections

The following summarizes key take aways from break out groups as they answered the following questions about equity, feasibility and safety:

What value in connection does this crossing hold? The future lid? How does this project represent and embody equity? This project expects to be all things-fast, affordable and iconic; Place these priorities in order of importance and explain. What does safety mean to you in the context of this crossing?

Participants expressed a desire to see this crossing be a safe, intuitive and welcoming place for all to gather, recreate and linger. Participants encouraged the city to plan for future mobility needs, including scooters and amenities to accommodate electric charging. By nature of the project, a new crossing increases connectivity and accessibility, yet participants urged the city to be proactive in considering how to ensure this crossing ensures equity and celebrates Bellevue's diversity in its design. Some ideas surrounding this need were:

- Incorporating, acknowledging and partnering with the local Native communities and tribal governments
- Providing thoughtful signage that improves wayfinding and is cross-cultural, i.e., signage that features universal symbology or is in multiple languages
- Incorporating infrastructure in the crossing design that ensures accessibility for those with disabilities, such as wide walkways, frequent benches for rest, ramps and high guard/handrails
- Incorporating designs that accommodate different group sizes as well as being family friendly
- Incorporate lighting into the design in such a way that it acts as a safety feature throughout the crossing

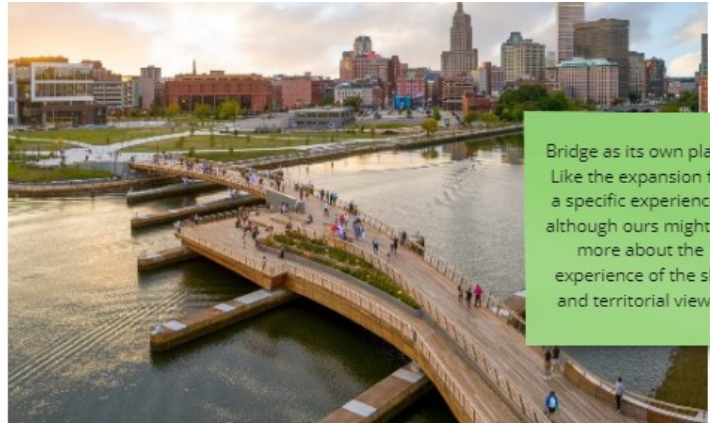
Place and Design

Key take aways from break out groups as they answered the following questions about aesthetics, destination and iconic perspective.

Where have you been that finds a piece of the magic that you want to have here? What are the moments you can imagine in this space? What would make you want to travel from another state or country to see the Grand Connection Crossing? What is most important that we can't miss? What would detract from the destination?

As a destination, participants saw endless capacity in this crossing. Participants wanted this space to feel inviting for people of all ages, backgrounds, and abilities, and for it to be a free space that allows for people to linger (frequent rest areas, covered or sheltered areas and options for children). Participants in this topic focused heavily on the opportunity this crossing brings to incorporate public art and education, including interactive elements. Some ideas for this included:

- Rotating public art installations
- Freeform art areas
- Historical and educational plaques and signage
- Unique and creative lighting, which would also serve as a safety measure at night
- Taking advantage of scenic views
- Landscaping with native plant species
- Interactive installations for children, such as play spaces, permanent hopscotch or scavenger hunts. Adding spaces welcoming to all age groups e.g. teens.



Bridge as its own place. Like the expansion for a specific experience - although ours might be more about the experience of the sky and territorial views.



Nice movement/sculptural form and bridge feels like an extension of the larger park

Figure 4: Comments from participants on design inspirational images.

Economic and Community Development

Key take aways from break out groups as they answered the following questions when discussing how the crossing should perform from a function and tourism perspective:

Questions for Miro Board: Who is this crossing for? What are you hoping this crossing does for you? What does it not need to do (could be done somewhere else)? What does activation mean (both with the crossing and later with the lid)?

Participants considered all facets of this topic with great creativity. Many ideas for economic opportunity shared roots with ideas in the other discussion areas of equity and aesthetics. Some common ideas include:

- Commissioned art installations
- Public art festivals
- Pop-up shops
- Integration and increased accessibility with pre-existing retail nearby
- Performance and/or event space

When regrouped into one meeting, after the three focus sessions, participants shared their group's takeaways with the larger group. Overall, participants agreed on the city's investment in the crossing and the value in bringing safe recreation, active transportation and rest for people of all ages and abilities. Participants were invited to continue sharing their feedback via Miro through Thursday, Dec. 11. (This was eventually revised to Thursday, Dec. 18 to address time lost due to the Miro system national unplanned shutdown that occurred during the design charette).

After the Miro comment period closed, all comments were recorded. Comments were then sorted into the reoccurring themes of community recreation, connectivity, safety and transportation.

See Appendix A for record of comments and theme break out.

Next steps

The project team will review the charrette discussions and Miro board comments, and consult them when feasible, to include the participants' feedback as they work to complete the 30% design. The team will also use the information gathered from the charrette to develop alternatives. Additionally, the charrette outcomes will be shared with the public at the upcoming online open house hosted on the [Engagingbellevue.com](https://engagingbellevue.com) platform in late February 2024, for the community to view and read.



Figure 5: Participants learning about the Grand Connection Program and how the crossing fits into the overall program.



Appendix A: Miro comments

Project team members facilitated small group discussions using Miro. All groups had the same questions three overarching sections: place and design; people and connections; and economic and community development. To close the charette, all three small groups were brought back together to form a large group to share a synopsis of their small group discussions. Due to an unplanned nationwide Miro system interruption, all comments were taken by project team members in each discussion group and posted to each group's Miro board after the design charette. With over 450 comments from participants, comments were sorted into four main themes, with in the perspective of the discussion groups and discussion questions.

The main teams:

- Community recreation
- Connectivity
- Safety
- Transportation

Original comments have been refined and sorted by themes below.

Main theme	Discussion Section	Discussion Question	Comments	# of similar Comments
Community recreation	Economic + Community Development	Beyond bike and pedestrian connections to public rights of ways and trails, what other kinds of connections might occur.	Integrate different levels of vertical as much as we can	x2
Community recreation	Economic + Community Development	Beyond bike and pedestrian connections to public rights of ways and trails, what other kinds of connections might occur.	Play space	x1
Community recreation	Economic + Community Development	How can this structure support the economic priorities of the City? How can the City best capture the value it might generate?	Music performance space would be good for all ages, events venue... Pritzker!	x1
Community recreation	Economic + Community Development	How can this structure support the economic priorities of the City? How can the City best capture the value it might generate?	Art tourism (Cloud Gate in Chicago generates billions \$\$)	x3

Main theme	Discussion Section	Discussion Question	Comments	# of similar Comments
Community recreation	Economic + Community Development	How can this structure support the economic priorities of the City? How can the City best capture the value it might generate?	Operationally, consider the role of NGOs to operate and maintain it.	x1
Community recreation	Economic + Community Development	How can this structure support the economic priorities of the City? How can the City best capture the value it might generate?	Intermittent places to people to rest and sit, enjoy view, take a break	x3
Community recreation	Economic + Community Development	How can this structure support the economic priorities of the City? How can the City best capture the value it might generate?	Play spaces, pavilions	x4
Community recreation	Economic + Community Development	How can this structure support the economic priorities of the City? How can the City best capture the value it might generate?	Make programming decisions that are future-forward, flexible	x4
Community recreation	Economic + Community Development	How can this structure support the economic priorities of the City? How can the City best capture the value it might generate?	Future Lid should reduce the noise pollution from I-405	x1
Community recreation	Economic + Community Development	How can this structure support the economic priorities of the City? How can the City best capture the value it might generate?	Free-flowing connections to lid park	x1
Community recreation	Economic + Community Development	What other types of development or investment might this bright catalyze that we haven't yet considered?	A neighborhood of spaces	x2
Community recreation	Economic + Community Development	What other types of development or investment might this bright catalyze that we haven't yet considered?	Significant works of art that guide you	x1
Community recreation	Economic + Community Development	What other types of development or investment might this bright catalyze that we haven't yet considered?	Noise control	x1
Community recreation	Economic + Community Development	What types of activities or experiences might occur on the bridge? How about for the lid?	Temporary art installations	x3

Main theme	Discussion Section	Discussion Question	Comments	# of similar Comments
Community recreation	Economic + Community Development	What types of activities or experiences might occur on the bridge? How about for the lid?	Multiple experiences at once.	x2
Community recreation	Economic + Community Development	What types of activities or experiences might occur on the bridge? How about for the lid?	Different age groups and how the use spaces	x2
Community recreation	Economic + Community Development	What types of activities or experiences might occur on the bridge? How about for the lid?	Downtown Bellevue has longstanding traditions/events, especially around winter holidays	x3
Community recreation	People + Connections	How can the bridge set the stage for a successful lid?	Celebration of Bellevue's diverse communities	x1
Community recreation	People + Connections	How can the bridge set the stage for a successful lid?	Focus groups with non-native English speakers and low-income (pay them)	x2
Community recreation	People + Connections	How can the bridge set the stage for a successful lid?	Incorporation of a major public artwork onto bridge	x1
Community recreation	People + Connections	How can this project and process empower the community and express its values?	Community driven and connections	x4
Community recreation	People + Connections	How can this project and process empower the community and express its values?	Ensure that it appears and acts as a public space for the entire width/distance.	x3
Community recreation	People + Connections	How can this project and process empower the community and express its values?	History	x1
Community recreation	People + Connections	How can this project and process empower the community and express its values?	How Seoul transformed a disused overpass into a garden in the sky	x3
Community recreation	People + Connections	How can this project and process empower the community and express its values?	Naming opportunities	x1
Community recreation	People + Connections	How can this project and process empower the community and express its values?	People, Nature, Technology themes	x5
Community recreation	People + Connections	How can this project and process empower the community and express its values?	Promoting healthy activities for all	x1

Main theme	Discussion Section	Discussion Question	Comments	# of similar Comments
Community recreation	People + Connections	How can this project and process empower the community and express its values?	Public art by artists from minority or disadvantaged communities	x1
Community recreation	People + Connections	What can this bridge do to address equity in Bellevue?	Bellevue's semi-public space associated with developments	x1
Community recreation	People + Connections	What can this bridge do to address equity in Bellevue?	connecting communities to connector: cross-cultural public art!	x5
Community recreation	People + Connections	What can this bridge do to address equity in Bellevue?	Ensuring connections to communities	x7
Community recreation	People + Connections	What can this bridge do to address equity in Bellevue?	Parks by definition increase equity!	x2
Community recreation	People + Connections	What can this bridge do to address equity in Bellevue?	Programming that reflects the community	x3
Community recreation	People + Connections	What can this bridge do to address equity in Bellevue?	Recognize and honor and it's not a play to pay but we need to honor communities	x1
Community recreation	People + Connections	What can this bridge do to address equity in Bellevue?	Signage that features universal symbology	x2
Community recreation	People + Connections	What can this bridge do to address equity in Bellevue?	Tribal recognition	x2
Community recreation	People + Connections	What can this bridge do to address equity in Bellevue?	What events can bring different groups to allow spaces for gathering.	x2
Community recreation	People + Connections	What places in Bellevue feel the most welcome and safe? What might this bridge learn from them?	Bell Square - places to sit, rest, congregate	x1
Community recreation	People + Connections	What places in Bellevue feel the most welcome and safe? What might this bridge learn from them?	Bellevue Park - family oriented place	x1
Community recreation	People + Connections	What places in Bellevue feel the most welcome and safe? What might this bridge learn from them?	Crossroads is colorful - lots of signage in different languages	x1
Community recreation	People + Connections	What places in Bellevue feel the most welcome and safe? What might this bridge learn from them?	Don't feel like you need to spend money to be there	x1
Community recreation	People + Connections	What places in Bellevue feel the most welcome and safe? What might this bridge learn from them?	Gathering places e.g. Millenium Park in Chicago	x4

Main theme	Discussion Section	Discussion Question	Comments	# of similar Comments
Community recreation	People + Connections	What places in Bellevue feel the most welcome and safe? What might this bridge learn from them?	Lake Hills Elementary - feels like part of neighborhood	x1
Community recreation	People + Connections	Who is using this connection? What are they connecting to/from?	Commuter, recreation, tourist	x6
Community recreation	People + Connections	Who is using this connection? What are they connecting to/from?	everyone - all age groups	x2
Community recreation	Place + Design	An object or view can be iconic, as can an experience. How would you balance between these?	Although the main focus should be the user experience, the structure itself should also be attractive to bring people from other places to come and see... and experience.	x4
Community recreation	Place + Design	An object or view can be iconic, as can an experience. How would you balance between these?	Treat the phase 1 Bridge as a lid that has activity occurring- place the capital D Design energy here	x2
Community recreation	Place + Design	Are there other precedents we should consider as we begin the design of this crossing and lid? What can we learn from this precedent?	Park space - opportunity to linger, not just pass through in a hurry	x8
Community recreation	Place + Design	Are there other precedents we should consider as we begin the design of this crossing and lid? What can we learn from this precedent?	Incorporation of Art and performing arts	x3
Community recreation	Place + Design	Are there other precedents we should consider as we begin the design of this crossing and lid? What can we learn from this precedent?	Native American settlement prior to all of us. Asian American residents for gardens.	x1
Community recreation	Place + Design	The grand connection is a sequence of experiences. What are the key experiences that this crossing should capture?	Accommodate a diversity of users - both those in a rush and those who want to linger	x3
Community recreation	Place + Design	The grand connection is a sequence of experiences. What are the key experiences that this crossing should capture?	Comfort for a variety of experiences	x6
Community recreation	Place + Design	The grand connection is a sequence of experiences. What are the key experiences that this crossing should capture?	Materials, transparency, creating views and places for pause	x3
Community recreation	Place + Design	The grand connection is a sequence of experiences. What are the key experiences that this crossing should capture?	How Seoul transformed a disused highway overpass into a botanical garden in the sky The Independent The Independent	x1
Community recreation	Place + Design	What are the iconic moments and destinations in Bellevue now? What makes them so? What makes Bellevue a special place to you?	Public Art Moments	x2

Main theme	Discussion Section	Discussion Question	Comments	# of similar Comments
Community recreation	Place + Design	What are the iconic moments and destinations in Bellevue now? What makes them so? What makes Bellevue a special place to you?	Plantings around the city show a change throughout the seasons	x3
Community recreation	Place + Design	What are the iconic moments and destinations in Bellevue now? What makes them so? What makes Bellevue a special place to you?	views from Meydenbauer Center	x1
Community recreation	Place + Design	What are the iconic moments and destinations in Bellevue now? What makes them so? What makes Bellevue a special place to you?	Bellevue Botanical Garden	x4
Community recreation	Place + Design	What are the iconic moments and destinations in Bellevue now? What makes them so? What makes Bellevue a special place to you?	Bellevue Downtown Park - the infinite fountain/waterfall feature. A great place to spend time with families.	x8
Community recreation	Place + Design	What are the iconic moments and destinations in Bellevue now? What makes them so? What makes Bellevue a special place to you?	Bellevue is Underrated, quaint, and charming	x1
Community recreation	Place + Design	What are the iconic moments and destinations in Bellevue now? What makes them so? What makes Bellevue a special place to you?	City Hall building - unique shape, public art, and welcoming spaces	x1
Community recreation	Place + Design	What are the iconic moments and destinations in Bellevue now? What makes them so? What makes Bellevue a special place to you?	City in a Park	x3
Community recreation	Place + Design	What are the iconic moments and destinations in Bellevue now? What makes them so? What makes Bellevue a special place to you?	Large public spaces	x6
Community recreation	Place + Design	What are the iconic moments and destinations in Bellevue now? What makes them so? What makes Bellevue a special place to you?	Snowflake Lane - because kids love them... lighting, falling snow, music, characters.	x2
Community recreation	Place + Design	What will draw people to this structure? What will make them stay and return?	Landmark public art	x3
Community recreation	Place + Design	What will draw people to this structure? What will make them stay and return?	A place to take in view	x5

Main theme	Discussion Section	Discussion Question	Comments	# of similar Comments
Community recreation	Place + Design	What will draw people to this structure? What will make them stay and return?	Coffee/brewery ; a place to sit and use space socially	x3
Community recreation	Place + Design	What will draw people to this structure? What will make them stay and return?	reading area/library like at Bryant Park	x1
Community recreation	Place + Design	What will draw people to this structure? What will make them stay and return?	Gathering spaces; seating areas	x3
Community recreation	Place + Design	What will draw people to this structure? What will make them stay and return?	regular daily events & special events	x6
Connectivity	Economic + Community Development	Beyond bike and pedestrian connections to public rights of ways and trails, what other kinds of connections might occur.	Autonomous robot delivery services?	x1
Connectivity	Economic + Community Development	Beyond bike and pedestrian connections to public rights of ways and trails, what other kinds of connections might occur.	Podium crossings and connections	x3
Connectivity	Economic + Community Development	Beyond bike and pedestrian connections to public rights of ways and trails, what other kinds of connections might occur.	emerging focus around Eastrail; that Eastrail will also be a front-door for development	x1
Connectivity	Economic + Community Development	Beyond bike and pedestrian connections to public rights of ways and trails, what other kinds of connections might occur.	Consider City prop on E side of 405	x1
Connectivity	Economic + Community Development	Beyond bike and pedestrian connections to public rights of ways and trails, what other kinds of connections might occur.	Transit, retail, resident space, conventions (a brake for the conventions)	x6
Connectivity	Economic + Community Development	Beyond bike and pedestrian connections to public rights of ways and trails, what other kinds of connections might occur.	Childcare Facilities	x2
Connectivity	Economic + Community Development	What other types of development or investment might this bright catalyze that we haven't yet considered?	The city's property as an asset	x2

Main theme	Discussion Section	Discussion Question	Comments	# of similar Comments
Connectivity	Economic + Community Development	What other types of development or investment might this bright catalyze that we haven't yet considered?	Circulation integrated into developments - not tacked on	x1
Connectivity	Economic + Community Development	What other types of development or investment might this bright catalyze that we haven't yet considered?	Shopping Centers (Like Crossroads)	x2
Connectivity	Economic + Community Development	What types of activities or experiences might occur on the bridge? How about for the lid?	Restaurants for pre drinks/desserts	x1
Connectivity	Economic + Community Development	What types of activities or experiences might occur on the bridge? How about for the lid?	Event venue/pavilion	x3
Connectivity	Economic + Community Development	What types of activities or experiences might occur on the bridge? How about for the lid?	Farmers markets, low-income housing, Incubators, Innovation Hubs	x3
Connectivity	Economic + Community Development	What types of activities or experiences might occur on the bridge? How about for the lid?	Reflect on gravity of Bellevue Way, history, stakeholders	x3
Connectivity	People + Connections	How can the bridge set the stage for a successful lid?	Integration with all developments	x1
Connectivity	People + Connections	How can the bridge set the stage for a successful lid?	The bridge at a higher elevation than a future lid. Differentiate the experience of the cross-connection experience with the lid experience.	x2
Connectivity	People + Connections	What can this bridge do to address equity in Bellevue?	Need really good integration with all of the retail and development	x1
Connectivity	People + Connections	What can this bridge do to address equity in Bellevue?	Solar roadway - roadway surface changes to change the channelization etc.	x1
Connectivity	People + Connections	What places in Bellevue feel the most welcome and safe? What might this bridge learn from them?	Meydenbauer Park - multiple view-points. Stopping at different elevations	x1
Connectivity	People + Connections	What places in Bellevue feel the most welcome and safe? What might this bridge learn from them?	Access points to the structure so people don't feel stuck in the middle	x2

Main theme	Discussion Section	Discussion Question	Comments	# of similar Comments
Connectivity	People + Connections	Who is using this connection? What are they connecting to/from?	Integrating Wilburton and Downtown Bellevue	x4
Connectivity	People + Connections	Who is using this connection? What are they connecting to/from?	light rail and other options on eastside	x1
Connectivity	People + Connections	Who is using this connection? What are they connecting to/from?	equity: connections beyond downtown	x2
Connectivity	Place + Design	Are there other precedents we should consider as we begin the design of this crossing and lid? What can we learn from this precedent?	Retail integration	x3
Connectivity	Place + Design	Are there other precedents we should consider as we begin the design of this crossing and lid? What can we learn from this precedent?	Importance of community buy-in -- both stakeholders and community members (East Link example...)	x2
Connectivity	Place + Design	The grand connection is a sequence of experiences. What are the key experiences that this crossing should capture?	Retail	x2
Connectivity	Place + Design	The grand connection is a sequence of experiences. What are the key experiences that this crossing should capture?	emerging downtown Bellevue skyline	x2
Connectivity	Place + Design	What are the iconic moments and destinations in Bellevue now? What makes them so? What makes Bellevue a special place to you?	Wilburton Trestle	x2
Connectivity	Place + Design	What are the iconic moments and destinations in Bellevue now? What makes them so? What makes Bellevue a special place to you?	Meydenbauer Bay - looking up into the City	x1
Connectivity	Place + Design	What are the iconic moments and destinations in Bellevue now? What makes them so? What makes Bellevue a special place to you?	Old Bellevue and Main St District.	x4
Connectivity	Place + Design	What are the iconic moments and destinations in Bellevue now? What makes them so? What makes Bellevue a special place to you?	Crossroads Mall - gathering place for diverse populations	x2
Connectivity	Place + Design	What will draw people to this structure? What will make them stay and return?	Pedestrian Scale. Pedestrian sense of discovery - shops located above below around	x4

Main theme	Discussion Section	Discussion Question	Comments	# of similar Comments
Connectivity	Place + Design	What will draw people to this structure? What will make them stay and return?	Strive for an international level of acclaim and recognition, as Bellevue welcomes the world (+3)	x3
Safety	Economic + Community Development	Beyond bike and pedestrian connections to public rights of ways and trails, what other kinds of connections might occur.	inclement weather	x2
Safety	Economic + Community Development	How can this structure support the economic priorities of the City? How can the City best capture the value it might generate?	Addressing - how do you 'feel' when you're there?	x1
Safety	Economic + Community Development	How can this structure support the economic priorities of the City? How can the City best capture the value it might generate?	we need to think about how to provide restrooms	x1
Safety	Economic + Community Development	What other types of development or investment might this bright catalyze that we haven't yet considered?	How much activity 7 days a week	x1
Safety	Economic + Community Development	What other types of development or investment might this bright catalyze that we haven't yet considered?	Integration of tech - wayfinding and activation	x2
Safety	People + Connections	How can the bridge set the stage for a successful lid?	Lighting (with color) Dynamic	x2
Safety	People + Connections	How can the bridge set the stage for a successful lid?	Establish and normalize a use etiquette (signage, wayfinding)	x1
Safety	People + Connections	How can the bridge set the stage for a successful lid?	Address south prevailing winds	x1
Safety	People + Connections	How can this project and process empower the community and express its values?	Encourage to use this crossing to give security to all people.	x4
Safety	People + Connections	What can this bridge do to address equity in Bellevue?	Accessibility	x1
Safety	People + Connections	What can this bridge do to address equity in Bellevue?	Lighting - colorful lighting! Needs to differentiate the experience from the street.	x1
Safety	People + Connections	What can this bridge do to address equity in Bellevue?	8' is not sufficient width for an inclusive experience	x1

Main theme	Discussion Section	Discussion Question	Comments	# of similar Comments
Safety	People + Connections	What can this bridge do to address equity in Bellevue?	Wayfinding that is clear no matter what language you speak	x2
Safety	People + Connections	What can this bridge do to address equity in Bellevue?	Incorporating universal design	x2
Safety	People + Connections	What can this bridge do to address equity in Bellevue?	Detectable Warning surfaces	x1
Safety	People + Connections	What places in Bellevue feel the most welcome and safe? What might this bridge learn from them?	Maintenance and Operations - look to Clyde Warren. Well maintained, immediate graffiti removal, etc.	x2
Safety	People + Connections	What places in Bellevue feel the most welcome and safe? What might this bridge learn from them?	Lighting - ensure no dark spots	x4
Safety	People + Connections	What places in Bellevue feel the most welcome and safe? What might this bridge learn from them?	Noise Reduction	x1
Safety	People + Connections	What places in Bellevue feel the most welcome and safe? What might this bridge learn from them?	Places that are used and visible	x8
Safety	People + Connections	What places in Bellevue feel the most welcome and safe? What might this bridge learn from them?	Blue boxes or emergency contacts	x1
Safety	People + Connections	Who is using this connection? What are they connecting to/from?	Mix of users/uses – need for clarity and safety at end points, especially @ light rail	x2
Safety	Place + Design	Are there other precedents we should consider as we begin the design of this crossing and lid? What can we learn from this precedent?	Uplighting	x4
Safety	Place + Design	Are there other precedents we should consider as we begin the design of this crossing and lid? What can we learn from this precedent?	Sound mitigation	x2
Safety	Place + Design	Are there other precedents we should consider as we begin the design of this crossing and lid? What can we learn from this precedent?	Safe place for all	x2
Safety	Place + Design	Are there other precedents we should consider as we begin the design of this crossing and lid? What can we learn from this precedent?	weather protection, parklet, seating, respite	x4

Main theme	Discussion Section	Discussion Question	Comments	# of similar Comments
Safety	Place + Design	The grand connection is a sequence of experiences. What are the key experiences that this crossing should capture?	define space for various user groups - keep people safe on bikes/walking and not conflict	x3
Safety	Place + Design	The grand connection is a sequence of experiences. What are the key experiences that this crossing should capture?	Noise reduction	x1
Safety	Place + Design	The grand connection is a sequence of experiences. What are the key experiences that this crossing should capture?	Safety needs to be visually evident before you enter the bridge	x6
Safety	Place + Design	What are the iconic moments and destinations in Bellevue now? What makes them so? What makes Bellevue a special place to you?	It is clean and walk friendly.	x2
Safety	Place + Design	What will draw people to this structure? What will make them stay and return?	ADA inclusiveness	x2
Safety	Place + Design	What will draw people to this structure? What will make them stay and return?	Surface that lights up - can change delineation, purpose for different events - https://solarroadways.com/	x2
Safety	Place + Design	What will draw people to this structure? What will make them stay and return?	Protection from highway noise	x1
Transportation	Economic + Community Development	Beyond bike and pedestrian connections to public rights of ways and trails, what other kinds of connections might occur.	Transit	x2
Transportation	Economic + Community Development	How can this structure support the economic priorities of the City? How can the City best capture the value it might generate?	easy access to bikes/peds/transit connections – need for more residency in those areas	x3
Transportation	Economic + Community Development	How can this structure support the economic priorities of the City? How can the City best capture the value it might generate?	crossing a centerpiece for highly walkable urban experience	x1
Transportation	Economic + Community Development	What other types of development or investment might this bright catalyze that we haven't yet considered?	The Eastrail and 120th connection needs to be considered and intuitive	x1
Transportation	Economic + Community Development	What other types of development or investment might this bright catalyze that we haven't yet considered?	Where will the bike share, storage located or integrated into the project?	x1

Main theme	Discussion Section	Discussion Question	Comments	# of similar Comments
Transportation	Economic + Community Development	What types of activities or experiences might occur on the bridge? How about for the lid?	Resting areas	x1
Transportation	Economic + Community Development	What types of activities or experiences might occur on the bridge? How about for the lid?	Mobile public art opportunities	x1
Transportation	Economic + Community Development	What types of activities or experiences might occur on the bridge? How about for the lid?	Trail oriented development	x4
Transportation	Economic + Community Development	What types of activities or experiences might occur on the bridge? How about for the lid?	Bigger opportunity for multimodal component	x2
Transportation	People + Connections	How can the bridge set the stage for a successful lid?	Recognize that the bridge is a part of the public trail system	x3
Transportation	People + Connections	How can the bridge set the stage for a successful lid?	Grade separation between ped and bike traffic	x4
Transportation	People + Connections	How can the bridge set the stage for a successful lid?	Developing the relationship with WSDOT and federal partners	x3
Transportation	People + Connections	How can this project and process empower the community and express its values?	Shift form a car-centric private City, evolving in a new direction	x3
Transportation	People + Connections	What can this bridge do to address equity in Bellevue?	Clear delineation between ped and bike?	x4
Transportation	People + Connections	What can this bridge do to address equity in Bellevue?	Part of public trail system	x3
Transportation	People + Connections	What can this bridge do to address equity in Bellevue?	Distance of the crossing is a big barrier.	x2
Transportation	People + Connections	What can this bridge do to address equity in Bellevue?	Additional mobility options	x1
Transportation	People + Connections	What places in Bellevue feel the most welcome and safe? What might this bridge learn from them?	A place that clearly signals active transportation	x3

Main theme	Discussion Section	Discussion Question	Comments	# of similar Comments
Transportation	People + Connections	Who is using this connection? What are they connecting to/from?	Light rail user visiting Bellevue	x1
Transportation	People + Connections	Who is using this connection? What are they connecting to/from?	We need to plan ahead for future mobility needs.	x1
Transportation	People + Connections	Who is using this connection? What are they connecting to/from?	People biking, walking, rolling.	x9
Transportation	Place + Design	An object or view can be iconic, as can an experience. How would you balance between these?	The experience from the ped/bike user should be prioritized	x5
Transportation	Place + Design	Are there other precedents we should consider as we begin the design of this crossing and lid? What can we learn from this precedent?	Prioritize Multimodal access	x4
Transportation	Place + Design	Are there other precedents we should consider as we begin the design of this crossing and lid? What can we learn from this precedent?	separate biking (all wheels) from congregating spaces	x1
Transportation	Place + Design	The grand connection is a sequence of experiences. What are the key experiences that this crossing should capture?	bridgeheads – entries	x2
Transportation	Place + Design	The grand connection is a sequence of experiences. What are the key experiences that this crossing should capture?	Bike repair facility (tools at a kiosk)	x3
Transportation	Place + Design	What are the iconic moments and destinations in Bellevue now? What makes them so? What makes Bellevue a special place to you?	Through block passages downtown - unique way to move through	x1
Transportation	Place + Design	What are the iconic moments and destinations in Bellevue now? What makes them so? What makes Bellevue a special place to you?	City in a Park (many parks) connected by regional trails has created a multi season sense of discovery	x3
Transportation	Place + Design	What are the iconic moments and destinations in Bellevue now? What makes them so? What makes Bellevue a special place to you?	Eastrail - celebrating the past, present, future of mobility	x1
Transportation	Place + Design	What are the iconic moments and destinations in Bellevue now? What makes them so? What makes Bellevue a special place to you?	Light rail stations that will connect people and places	x2

Main theme	Discussion Section	Discussion Question	Comments	# of similar Comments
Transportation	Place + Design	What will draw people to this structure? What will make them stay and return?	Make it the easiest way to get to downtown	x1
Transportation	Place + Design	What will draw people to this structure? What will make them stay and return?	Pedestrian experience will draw; challenge to have them stay and return would be the noise of 405	x1

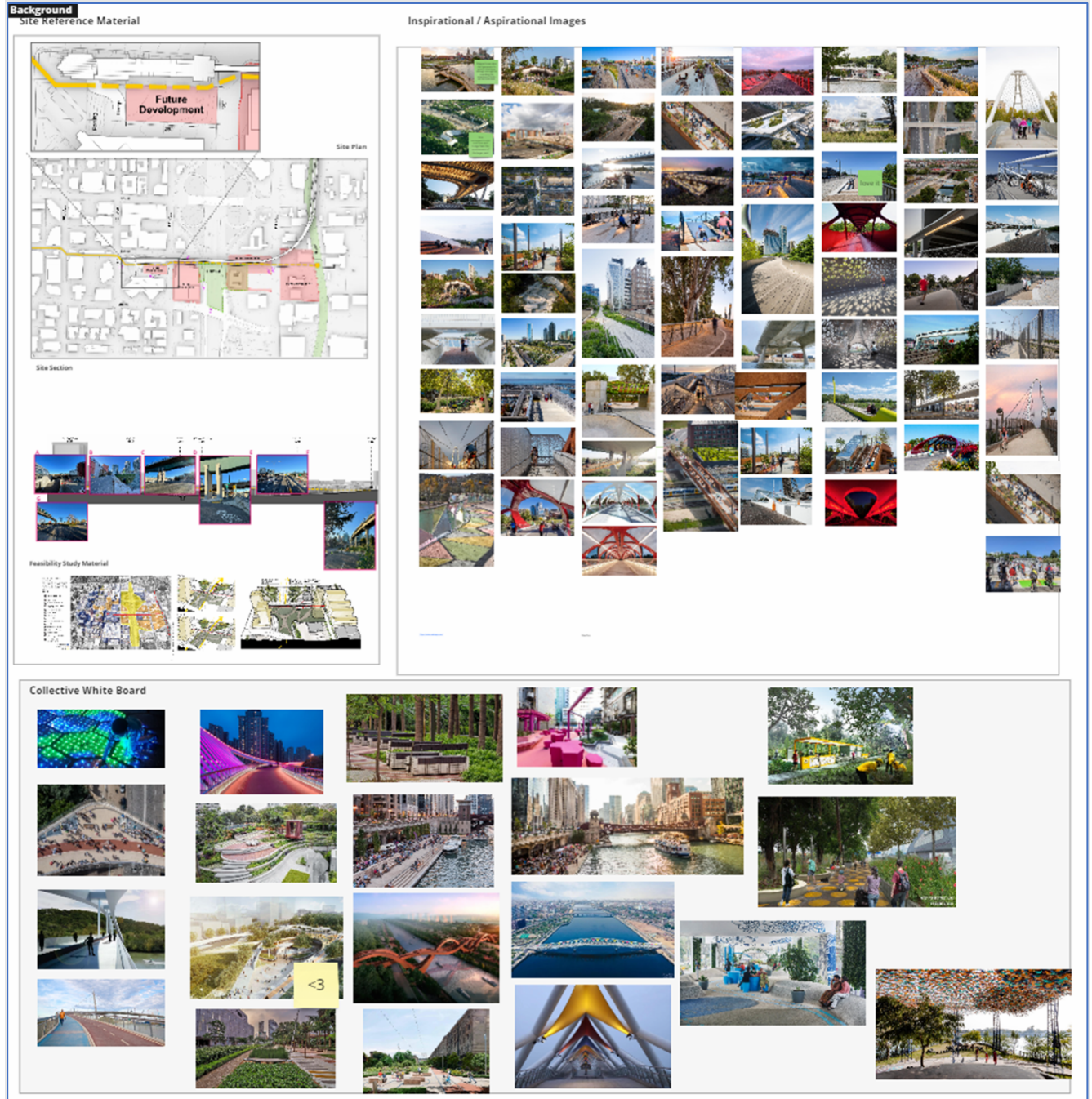


Appendix B: I-405 Crossing Design Charette Miro Board

The project design team used Miro to facilitate this hybrid charrette to help attendees visualize and share and develop ideas with small group facilitators before sharing with the larger group. Below are images of each groups' background and discussion board. The Miro tool was used the day of the Charette, Monday, Dec. 4, and left open for two weeks until Thursday, Dec. 18. Attendees had the ability to return to the tool and share lingering thoughts with the design team.

Group 1 (In-Person): Background and Discussion Boards

Facilitators: Jeanne Acutanza, Stephen Van Dyck, Cameron Rouze, and Jamie Strauz-Clark

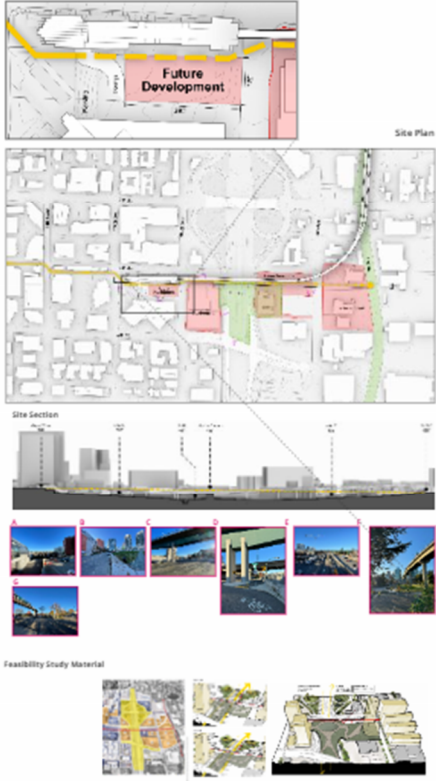


Group 3 (Virtual) Background and Discussion Boards:

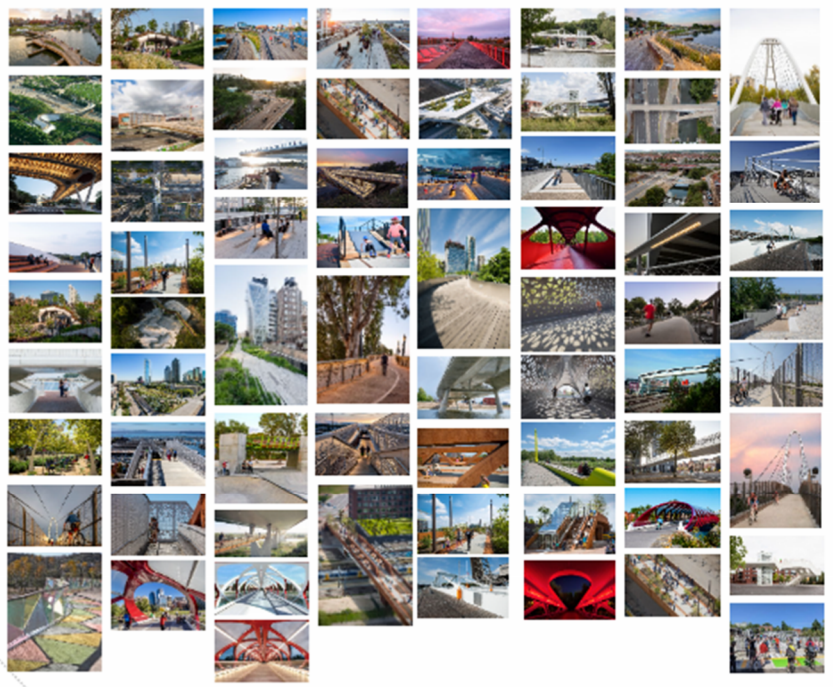
Facilitators: Lorelei Williams, Schuyler McAuliffe, Tara Green, and Laura LaBissoniere-Miller

Background

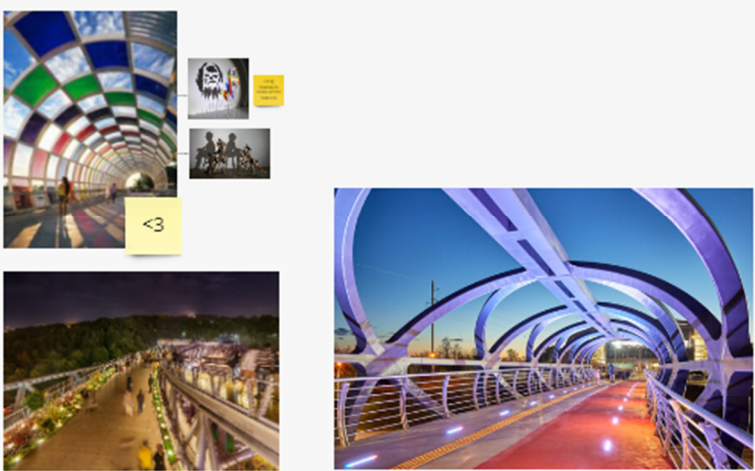
Site Reference Material



Inspirational / Aspirational Images



Collective White Board



Place + Design

Discussion Questions

1. What are the basic elements and distributions in Belmont used? What makes them so? What makes Belmont a special place to you?
2. Are there other precedents we should consider as we begin the design of this crossing and lot? What can we learn from the precedents?
3. What will draw people to this structure? What will make them stay and return?
4. The grand connection is a sequence of experiences. What are the key experiences that this crossing should capture?
5. An object or structure built, as can an experience. How would you balance between them?

What are the basic elements and distributions in Belmont used? What makes them so? What makes Belmont a special place to you?



Are there other precedents we should consider as we begin the design of this crossing and lot? What can we learn from the precedents?



What will draw people to this structure? What will make them stay and return?



The grand connection is a sequence of experiences. What are the key experiences that this crossing should capture?



An object or structure built, as can an experience. How would you balance between them?



People + Connections

Discussion Questions

1. Who is using this connection? What are they connecting to/for?
2. What plans in Belmont led to the need between and why? What might this bridge learn from them?
3. What can the bridge do to address equity in Belmont?
4. How can the project and process empower the community and express its values?
5. How can the bridge set the stage for a successful lot?

Who is using this connection? What are they connecting to/for?



What plans in Belmont led to the need between and why? What might this bridge learn from them?



What can the bridge do to address equity in Belmont?



How can the project and process empower the community and express its values?



How can the bridge set the stage for a successful lot?



Economic + Community Development

Discussion Questions

1. How can this structure support the economic priorities of the City? How can the City best capture the value it might generate?
2. What types of activities or experiences might occur on the bridge? How about for the lot?
3. Beyond labor and pedestrian connections to public rights of ways and calls, what other kinds of connections might occur?
4. What other types of development or investment might this bridge catalyze that we haven't yet considered?

How can this structure support the economic priorities of the City? How can the City best capture the value it might generate?



What types of activities or experiences might occur on the bridge? How about for the lot?



Beyond labor and pedestrian connections to public rights of ways and calls, what other kinds of connections might occur?



What other types of development or investment might this bridge catalyze that we haven't yet considered?

