

BELLEVUE POLICE DEPARTMENT



1981 ANNUAL REPORT

CITY COUNCIL



Honorable Richard Foreman
Mayor



Honorable Roy Ferguson



Honorable Mab Tocher
Mayor Pro-Tem



Honorable
Cary Bozeman



Honorable
Dru Briggs



Honorable
Maria Cain



Honorable
Mike Evered

CITY MANAGER



Ms. Andrea Beatty

CIVIL SERVICE COMMISSION

Mr. Earle Murray, Chairman
Ms. Laverne Hall
Mr. Hank Curran
Ms. Marylee Landerholm
Mr. Harold Corkrey

Chief's Message

Ms. Andrea Beatty, City Manager
City of Bellevue, Washington



Dear Ms. Beatty:

It is with considerable pleasure that I can begin our 1981 Annual Report by noting that our crime rate **decreased** by - 7% and in fact, was down in nearly every major category over the preceding year!

This experience is in direct contrast to what occurred in the surrounding area where the same crimes increased by + 16% in Kirkland, + 9% in Redmond, + 8% in Renton, and + 3% in Seattle. Nationally, violent crimes - murder, rape, robbery, and assault - rose 1%, in Bellevue these same crimes fell 9%. Why? Well, I would suggest that what simply happened is when we were finally provided with an adequate level of personnel resources, we put them to work on the problem and the results show a direct relationship to staffing.

As you know, the City Council authorized 10 additional officers in the 1981 budget and we concentrated on hiring already experienced people through our so-called "Steal-a-Cop" program rather than rely upon past practice of employing new recruits. Accordingly, we were able to save 15 weeks of training per individual but more importantly, we were immediately able to apply their proven skills to the street without having to await the 3 or more year seasoning period that is usually required.

I would add, however, that we still remain an especially cost-effective operation and while the average number of police per capita in this metropolitan area's municipal police departments remains at 1.86 per 1,000, we are still one of the lowest with only 1.41 per 1,000. And, with our per capita costs of \$67.68, we are well below the average funding level of \$84.12 for those other agencies too, but by stressing both quality in our personnel selection and working closely with the community in a mutual endeavor to prevent crime, we seem literally to be able to do more with less.

As we progress into 1982, our goals will be to maintain the reversal in our crime rate and additionally reduce motor vehicle accidents so that Bellevue will be an all around safer living environment.

Respectfully yours,

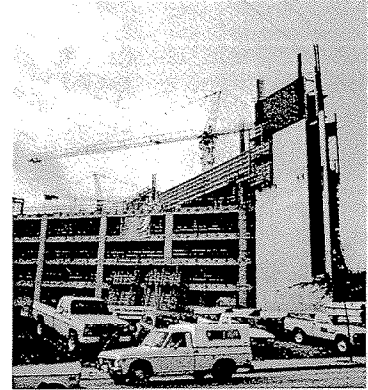
A handwritten signature in black ink that reads "D.P. Van Blaricom". The signature is written in a cursive, flowing style.

D.P. Van Blaricom
Chief of Police

Bellevue On The Move Up

Bellevue is a town on the move, some call it a boom town, some call it a town that is happening. Whatever one chooses to call it, Bellevue is a town in transition, well on the way to defining its own personality and taking its place as the center for such diverse markets as computer software, high technology medical equipment, telephone equipment, information management systems, and pharmaceuticals. A brief glance at the phone book reveals that Bellevue is the regional or national headquarters for a large number of internationally known corporations.

Responding to demands for increased living, working, and playing space has focused great attention on building construction and provided a revitalization for the Central Business District of downtown Bellevue. Millions of dollars are being spent to erect six multi-story buildings for residential, office and retail use. These buildings will offer over two million square feet of usable floor space. Additionally, the park-like N.E. 6th street corridor complete with trees, benches, pedestrian walkways and store-front concessions is in the planning stages.



Readying itself to meet the law enforcement needs of the new Bellevue population and the proliferation of economic, cultural, and social activities they attract, poses the planning challenge for the Bellevue Police Department in the decade of the 80's.

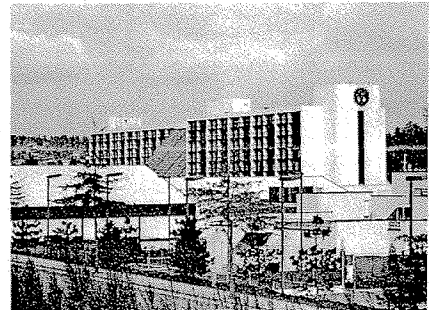
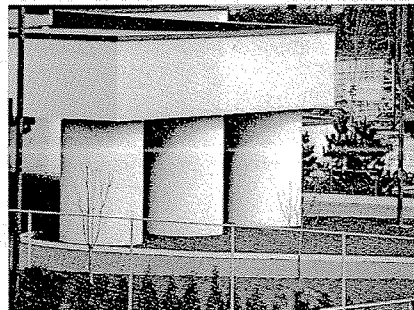
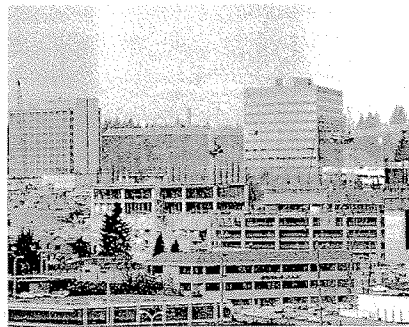
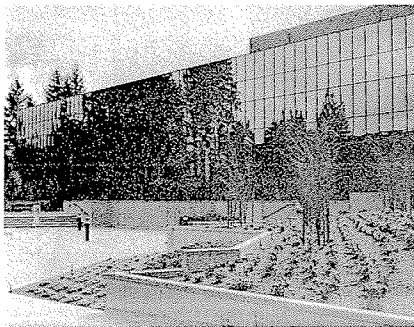
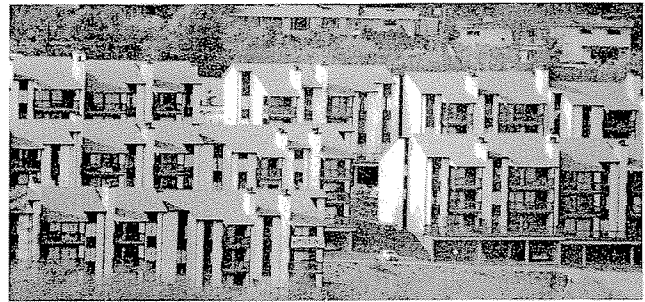
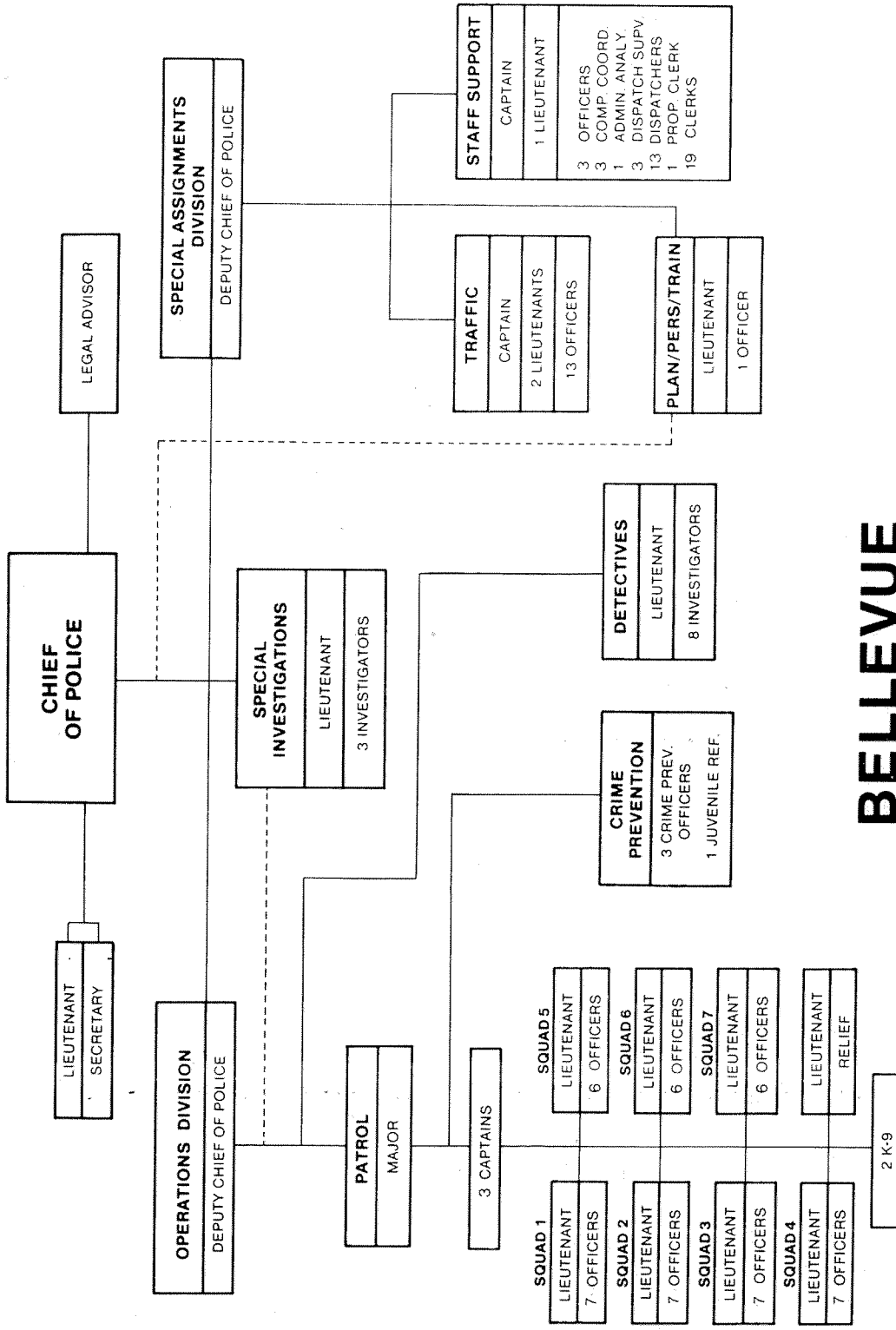


Table of Contents

Personnel Chart	1
Area Wide Comparisons	2
Personnel/Budget	3
Crime Statistics	4
Arrest Statistics	6
Calls for Police Response	7
Patrol	8
K-9 Unit	9
Detectives	10
Special Investigation Unit	11
Crime Prevention Unit	12
Traffic	14
Hazardous Device Unit	16
Planning/Personnel/Training	17
Staff Support	18
Employees of the Year	19
A Look Back	20



BELLEVUE POLICE DEPARTMENT 1981

D.P. VAN BLARICOM
CHIEF OF POLICE

TOTAL PERSONNEL 146

POLICE (LEOFF) PERSONNEL	
Chief of Police	1
Deputy Chief of Police	2
Major	1
Captain	5
Lieutenant	15
Police Officer	80
Complaint Coordinator	3
	<hr/> 107

CIVILIAN PERSONNEL	
Legal Advisor	1
Administrative Analyst	1
Dispatch Supervisor	3
Dispatchers	13
Secretary	1
Property Clerk	1
Clerk - Full Time	18
Clerk - Half Time	1
	<hr/> 39

TO: R. H. Wittauer, Captain

FROM: L. Lorack, Lieutenant

DATE: January 14, 1982

SUBJ: ANNUAL TRAFFIC STATISTICS

The statistics for the year of 1981 as compared to the same period of 1980 are listed below.

<u>ENFORCEMENT CITATIONS</u>	<u>1980</u>	<u>1981</u>	<u>% CHANGE</u>
TRAFFIC	7547	6337	-19%
PATROL	1439	1963	+36%
<u>TOTAL</u>	<u>8986</u>	<u>8300</u>	<u>- 8%</u>

TOTAL ACCIDENT CITATIONS ISSUED IN 1981..... 1225

ACCIDENTS

TRAFFIC	1892	1602	-16%
PATROL	304	679	+123%
<u>TOTAL</u>	<u>2196</u>	<u>2281</u>	<u>+ 4%</u>

COMPARATIVE BREAKDOWN

Number of Persons Injured	778	<u>816</u>	+ 5%
Number of Pedestrian Accids.	43	28	-35%
Number of Bicycle Accidents	28	32	+14%
Number of Fatality Accidents	2	3	+50%
Number of Fatalities (Deaths)	2	3	+50%
Number of Hit & Runs	520	542	+ 4%
Monetary Loss	\$2,612,983	<u>\$2,834,209</u>	+ 8%

INJURED

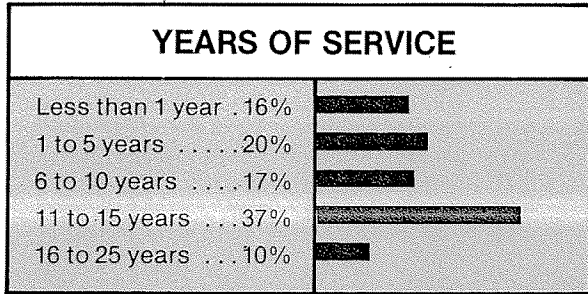
Area Wide Comparisons

POLICE PERSONNEL AND COST PER CAPITA

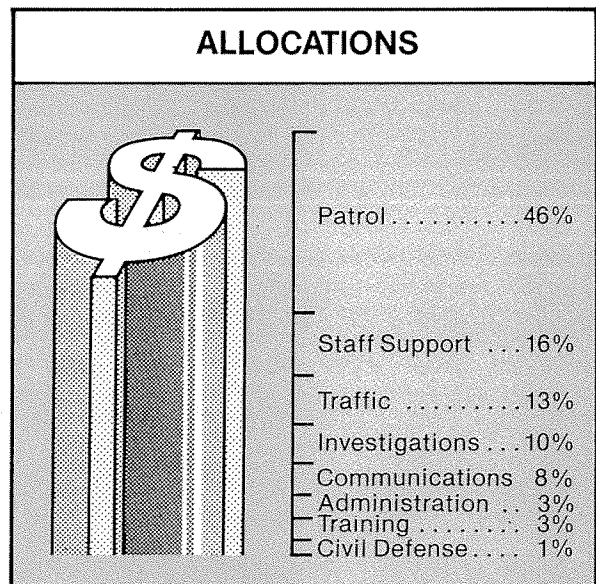
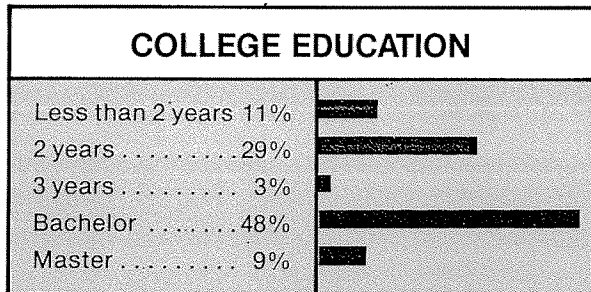
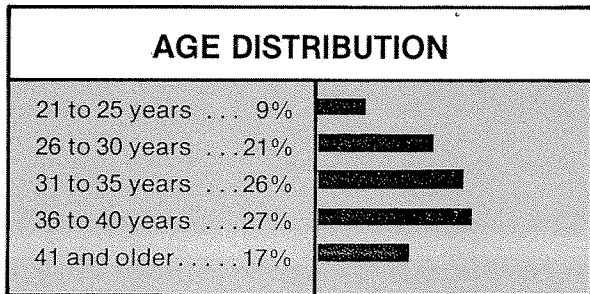
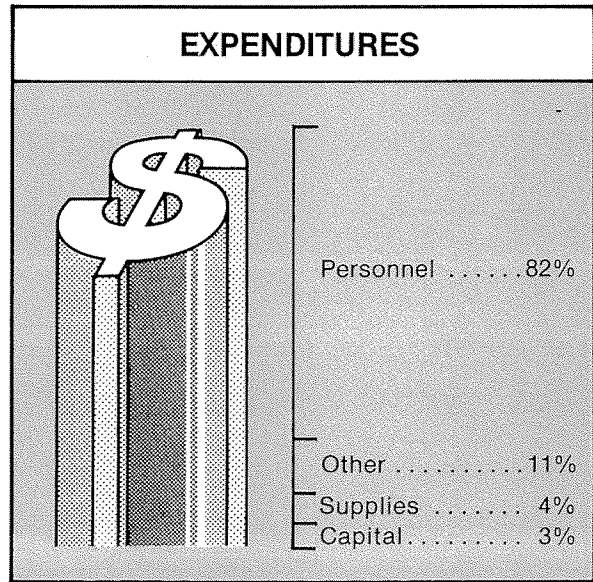
City	Population	Budget	Police Per 1,000 Pop.	Per Capita Costs
Auburn	26,417	2,379,902	1.89	\$ 90.09
BELLEVUE	73,903	5,001,696	1.41	67.68
Bremerton	36,208	2,611,089	1.74	72.11
Bothell	7,943	549,464	1.38	69.18
Clyde Hill	3,229	166,310	1.55	51.50
Everett	54,413	4,117,094	1.80	75.66
Issaquah	5,536	446,045	1.81	80.57
Kent	23,152	2,691,297	2.25	116.24
Kirkland	18,779	1,345,438	1.49	71.65
Medina	3,220	206,501	1.86	64.13
Mercer Island	21,552	1,282,732	1.34	59.52
Redmond	23,318	1,547,174	1.46	66.35
Renton	30,612	3,093,265	1.93	101.05
Seattle	493,846	44,504,711	2.13	90.12
Tacoma	158,501	11,667,396	1.60	73.61
Tukwila	3,578	1,181,708	7.27	330.27
TOTALS	984,207	82,791,822	1.86	84.12

Source: Washington State Law Enforcement Survey

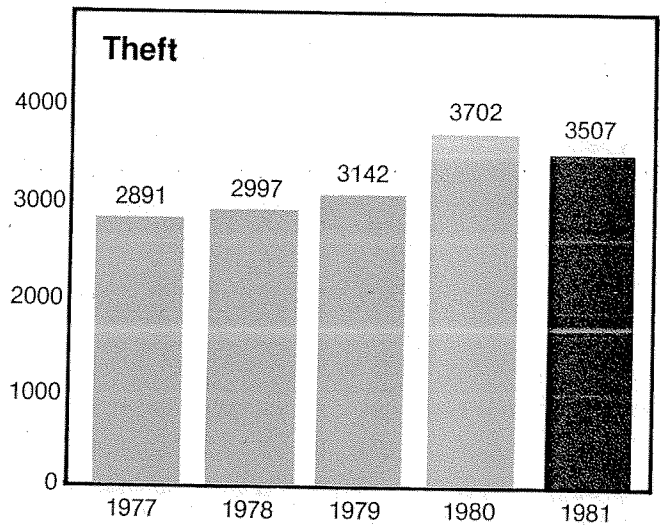
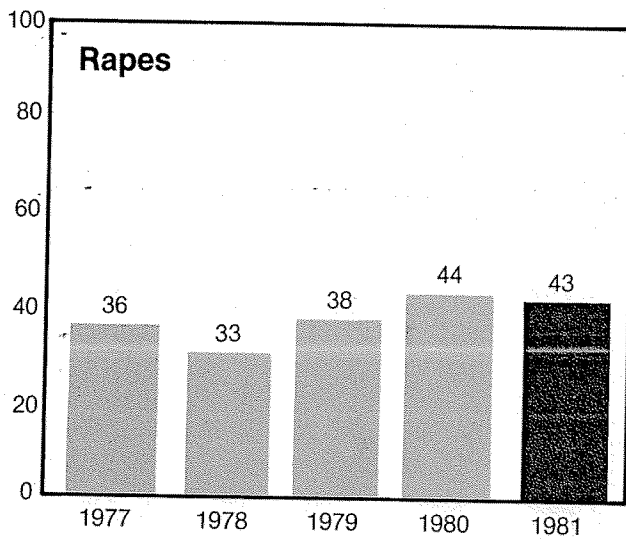
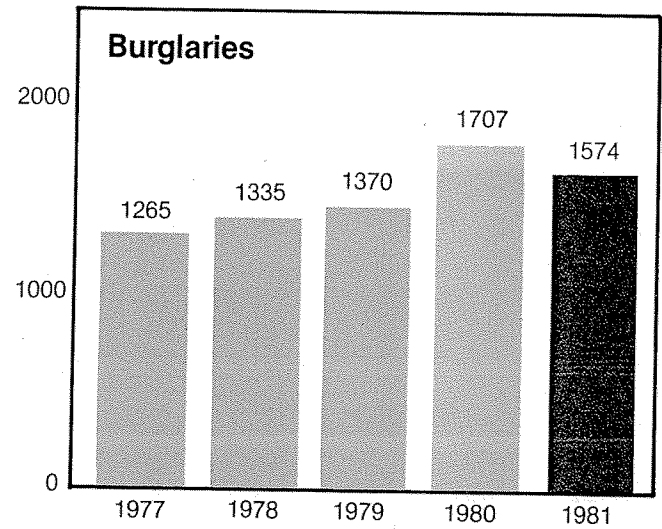
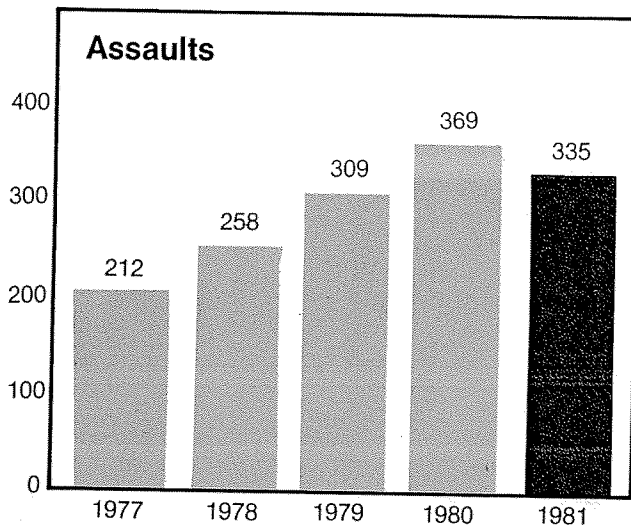
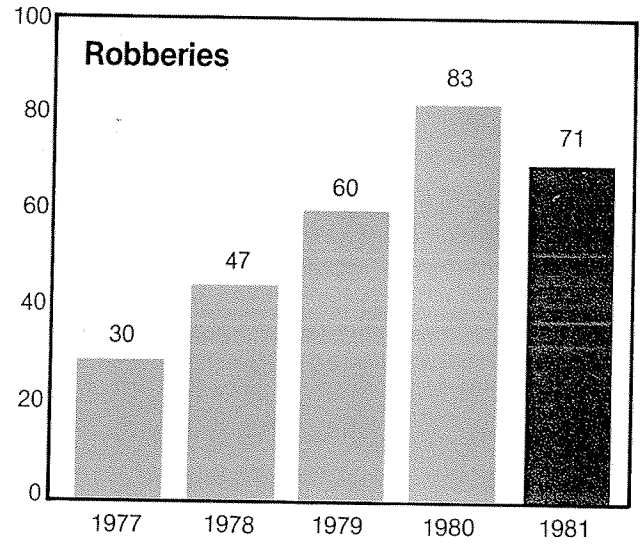
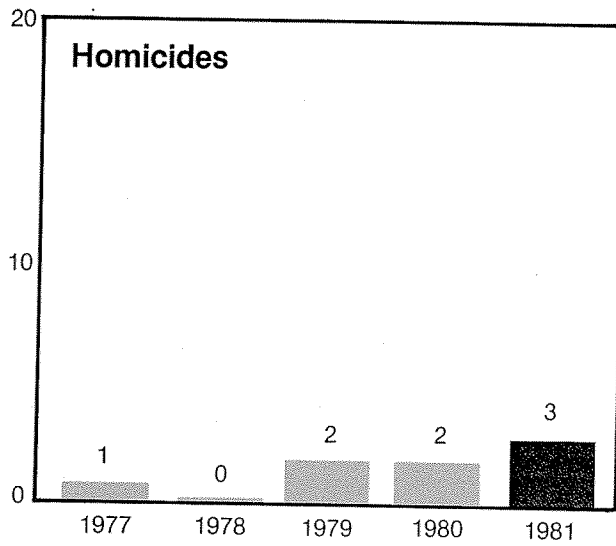
Personnel/Budget

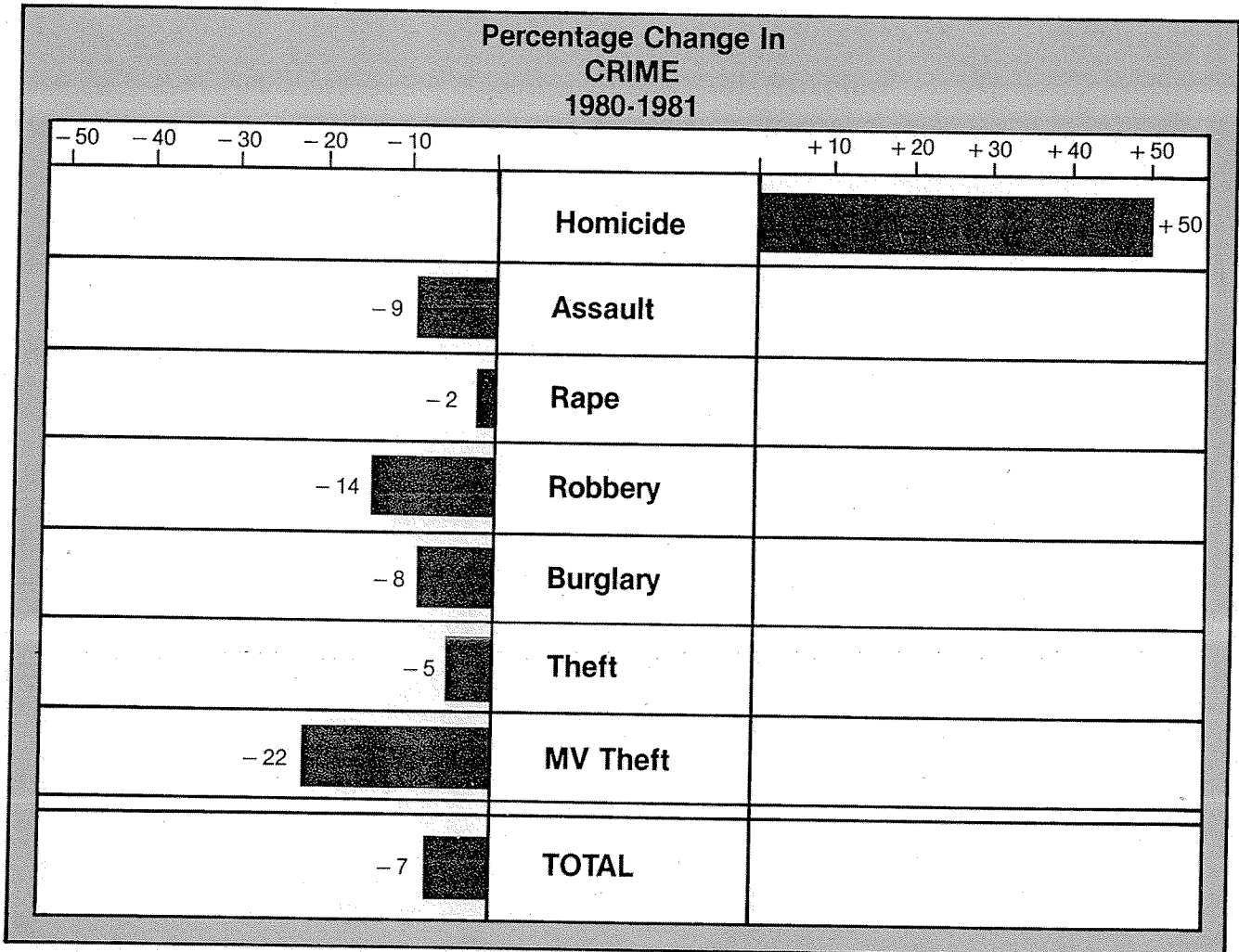
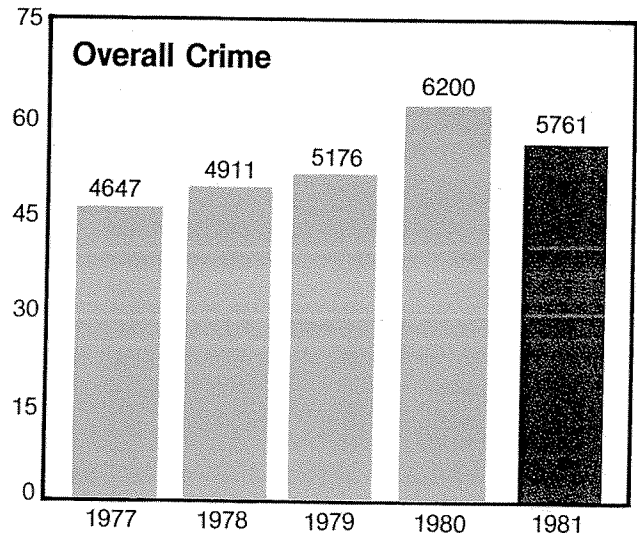
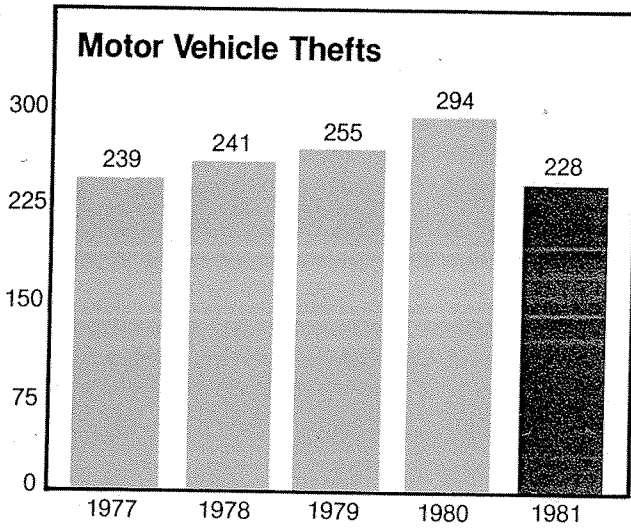


City of Bellevue
 Police Department 1981 Budget
 \$5,226,345



Crime Statistics





Arrest Statistics

1981 ARREST DATA

Part I Crimes

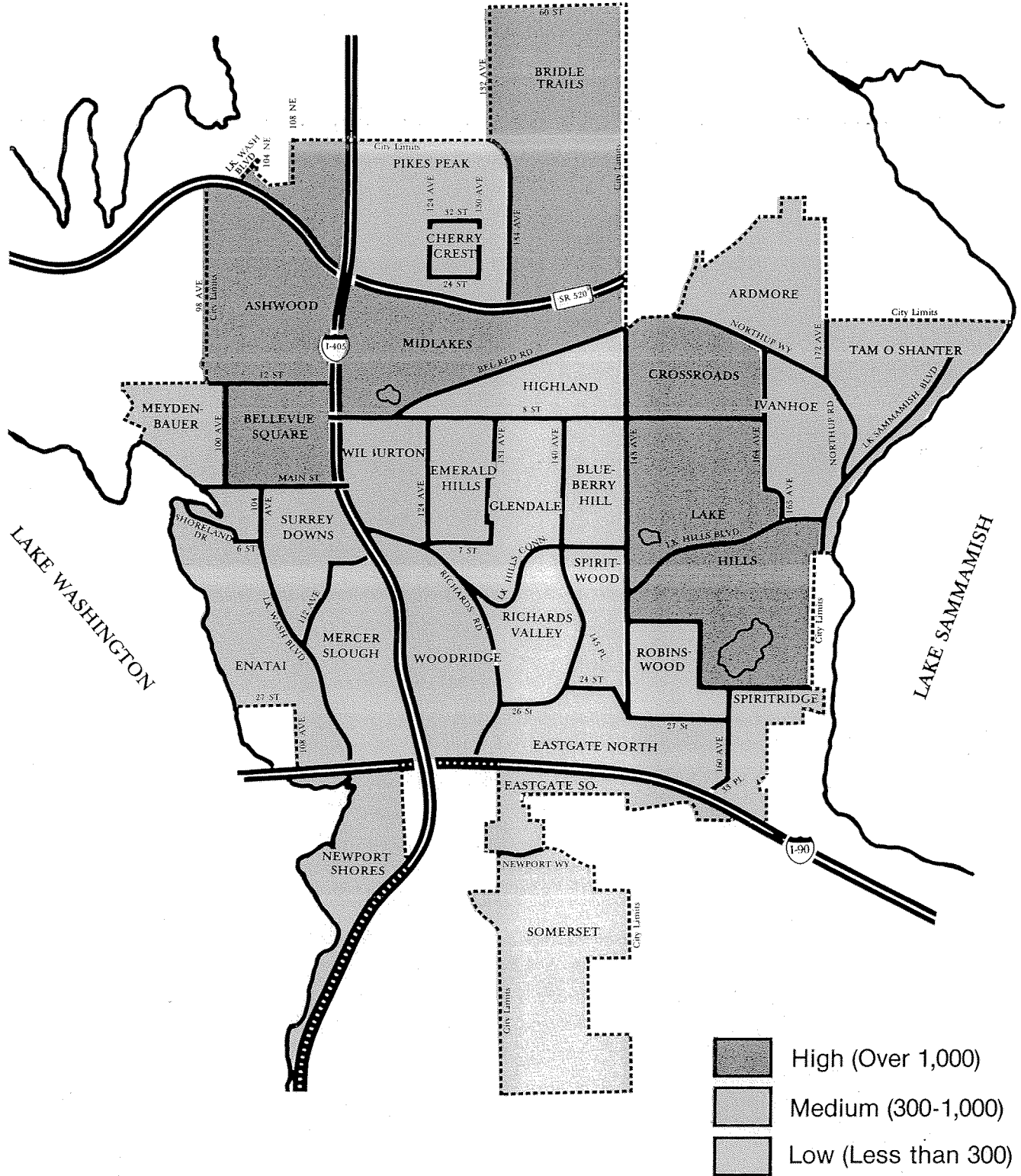
Crime	Adult	Juvenile
Arson	0	1
Assault	93	21
Burglary, residential	32	43
Burglary, commercial	20	23
Burglary, other	6	3
Homicide	1	0
Homicide, attempts	1	0
Motor Vehicle Strips/Prowls	13	9
Shoptlife	254	247
Theft, other	104	91
Theft, Motor Vehicle	10	7
Rape	7	1
Robbery, armed	17	2
Robbery, strongarm	7	5
Kidnapping	2	0
	567	453

Part II Crimes

Exposing	2	3
Forgery	5	4
Malicious Mischief	46	26
Molesting	3	0
Possession Stolen Property	40	39
*All others	1,550	427
	1,646	499
GRAND TOTALS	2,213	952

*Does not include any traffic arrests, except Driving While Intoxicated.

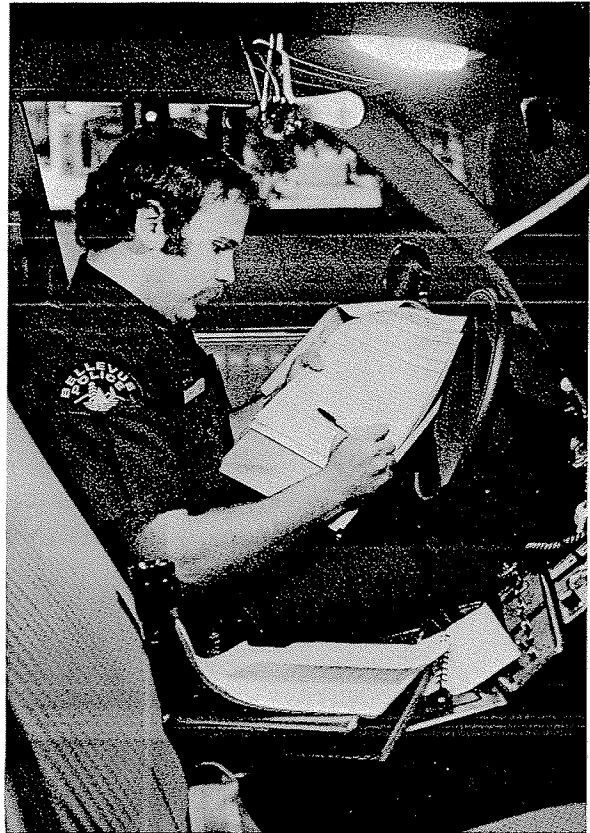
Calls for Police Response



Patrol

The Patrol Section is the heart of the Bellevue Police Department. The initial response to nearly all calls is the officer wearing the uniform. The call may be nothing more than a barking dog or a stalled car; it may also be an armed hostage taker or homicide. The uniformed officer must conduct initial investigations of all types of crime and followup many felony cases which normally were assigned to the Detective Unit in the past.

In order to meet these demands the Patrol Section has been staffed with the best equipped and most highly educated officers in the state. The department added 10 new positions in 1981 and in order to fill these positions effectively, a program known as "Recruit Your Partner" (but commonly called "Steal-a-Cop") was initiated. A total of 78 officers from departments as far flung as Florida and Hawaii were interviewed. All vacancies were thus filled by experienced officers, saving the department thousands of dollars and hundreds of hours in training costs. They brought many new ideas and techniques to aid the existing veteran officers.



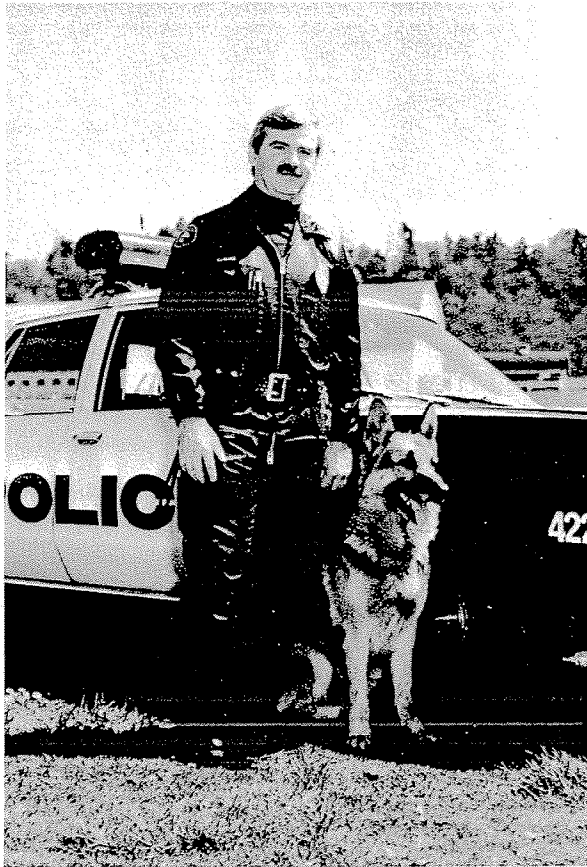
1981 produced an incident of civil discord reminiscent of the early 1970's when a meeting of the State Human Life Convention was disrupted by protesters supporting women's rights to legal abortion. Protesters were removed from the meeting with what was later described "as remarkable restraint on behalf of the Bellevue Police." Two officers suffered minor injuries when struck by a rock throwing youth.

The patience and professional behavior displayed in the above incident is typical of patrol officers of the Bellevue Police Department. The citizens of Bellevue can rest assured the Patrol Section will continue to serve their needs in the future as we have in 1981.

K-9 Unit

The K-9 unit is comprised of two highly trained handler/dog teams. Due to the retirement of one dog in early 1981, and the necessity to train a new one plus training a new handler, the K-9 unit operated with only one team during most of 1981.

During 1981, the handlers applied their dogs 451 times resulting in the arrest of 48 persons, \$7,443.90 in stolen property recovered, and numerous building and area searches.



Outstanding in its police application, cost effectiveness, and PR work the K-9 unit continues to be an intergal part of the patrol operation and provides a vital service to both the police and the community.



FACTS:

- \$7,443.90 recovered property
- 925 hours training
- 3,022 hours of service
- 451 applications of the K-9
- 48 total arrests due to K-9

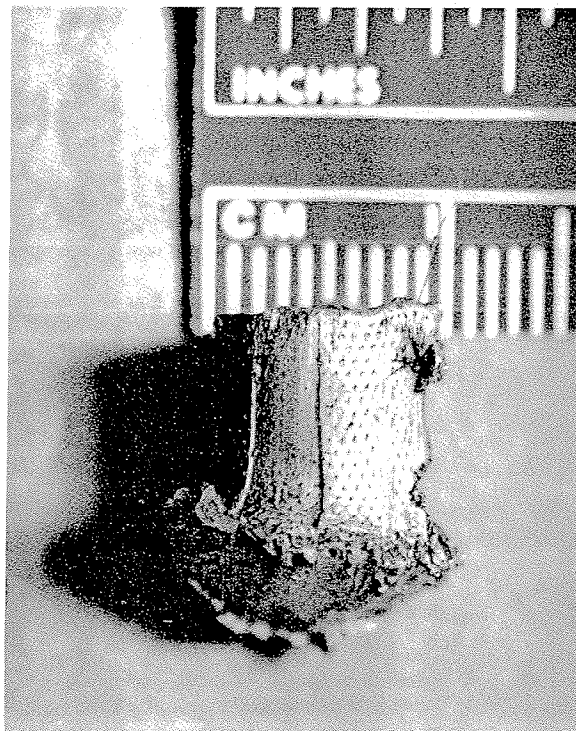


Detectives

One Lieutenant and eight Detectives investigated a wide range of major crimes including homicide, rape, assault, robbery, commercial and residential burglary, auto thefts, check cases, arsons, frauds and forgeries.

Accompanying an overall - 7% decline in serious crimes during the year, an exceptionally high clearance rate for rape, robbery and motor vehicle theft (+ 25%, + 30% and + 22%, respectively), resulted due to a splendid Patrol, Crime Prevention and Detective team effort.

In 1981 Detectives initiated a "Pawn Shop Detail," designed to increase the recovery rate of stolen property. With the aid of a computer, property pawned or sold to a second hand dealer is entered, screened and compared by description to the stolen property file.



Over 1700 cases were investigated by the Detectives including 3 homicides, 43 rapes, 71 robberies and over 200 serious assaults.

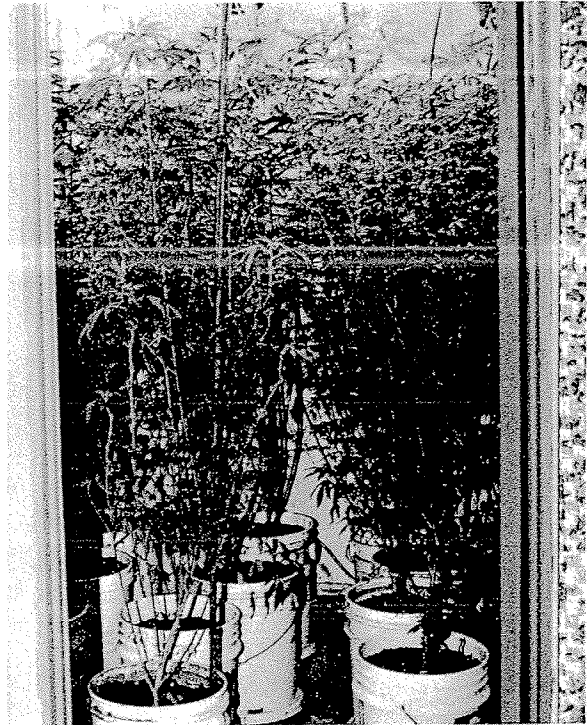
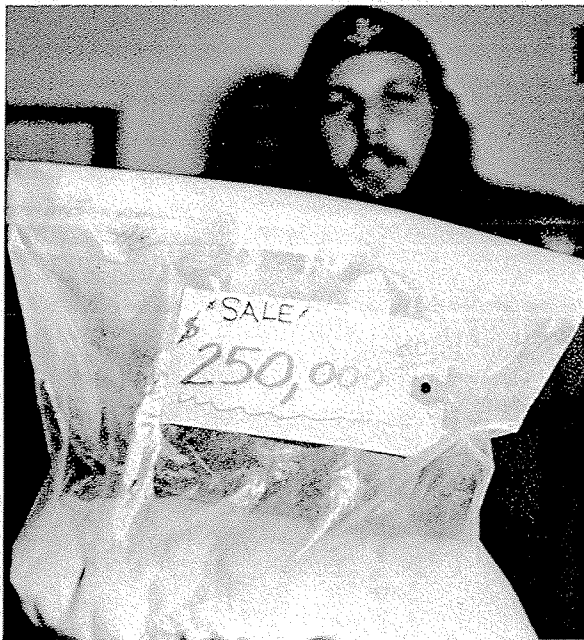


Special Investigation Unit

Special Investigations Detectives conduct narcotic and vice investigations and provide training and specialized assistance to uniformed personnel. Employing limited funds, strong direction and imaginative techniques, the Unit confiscated nearly two million dollars worth of controlled substances and seized 10 vehicles. The drug seizure constituted a 100% increase over 1980.

Cocaine and high grade marijuana continue to be the focal point of the Unit's efforts, but increased vice activity in the form of escort services was evident. It is anticipated that the growth of the hotel industry in Bellevue will make prostitution and gambling a higher priority item in the future.

Near the end of 1981 Mercer Island and Kirkland contributed officers to a task force to help combat the Eastside drug problem. This approach has been very successful and will be joined by Redmond, and Issaquah in 1982.



DRUGS SEIZED		
Type	Amount	Street Value
Marijuana	350,181.59 g	\$1,846,005.20
Cocaine	512.60 g	72,471.75
Hashish	82.80 g	1,332.00
Percodan	329 hits	3,948.00
Amphetamines	852 hits	1,277.50
Quaalude	179 hits	1,254.00
Librium	100 hits	350.00
Valium	69 hits	306.00
Darvacet	100 hits	250.00
Mescaline	153.00 g	229.00
Phenobarbs	30 hits	196.50
LSD	31 hits	155.00
Codeine	36 hits	129.50
Navane	29 hits	116.00
Darvon-N	22 hits	44.00
Dalmane	10 hits	40.00
Secobarbital	7 hits	38.50
Diazepam	6 hits	24.00
Tylenol #3	5 hits	16.50
Demerol	2 hits	12.00
Gluthehimide	3 hits	12.00
Talwin	3 hits	9.00
Diethylpropin	2 hits	8.00
Ampicillin	4 hits	8.00
Misc.	26 hits	45.00
Total		\$1,938,147.40

Crime Prevention Unit

The Crime Prevention Unit consists of three police officers who conduct commercial, residential and school Crime Prevention programs, as well as coordinate the senior volunteer program and the cadet program. They locate, install and maintain the portable alarms and stake-out cameras. The officers are also called upon to advise citizens on subjects that deal either with security or other aspects of police services.

In 1981 Crime Prevention officers conducted commercial seminars for businesses in Bellevue. These seminars dealt mostly with personal safety but also covered commercial burglary, commercial robbery, employee theft and shoplifting. Bank employee training programs were conducted in addition to the other seminars. Most of these programs involved mock hold-ups in which employees learned the procedures by actually walking through them.



The Senior Volunteer Program is a program that involves retired volunteers who donate their time and work. In teams of two, they mark property for citizens and conduct residential security surveys. The average age of these nine volunteers is 74. In 1981 seniors donated 1,006 hours to the department and did 205 surveys. Four of the nine volunteers have been with the program since it began in 1976.

Stake-out cameras and alarms . . .	47
Crime Prevention meetings and training sessions	65
Commercial seminars	99
Block Watch meetings	84
Class presentations	82
Security surveys	62



The Police Cadet Program has been sponsored by the Police Department since 1973. Crime Prevention officers act as the main advisory staff for these young people who range in age from 14 to 20. The 15 police cadets put in over 1,700 hours in 1981. They assisted in crowd control, traffic control and security for such activities as the Bellevue Jazz Festival, the Arts and Crafts Fair, numerous runs, Seafair, and the Moss Bay Celebration. In addition, cadets also spent time helping with Crime Prevention problems. They helped with Traffic Safety programs and worked with patrol and detectives on searches for people and evidence. One of the less enviable parts of their job is being a quarry for training the K-9 dogs. A program that has proved especially valuable is the school vandalism patrol which the cadets have been involved in since 1977. In 1981 the cadets spent 455 hours on school patrol. The remainder of the volunteer time was spent riding with officers and in meetings or training sessions. The dedication and assistance of these young adults is greatly appreciated by the police officers.



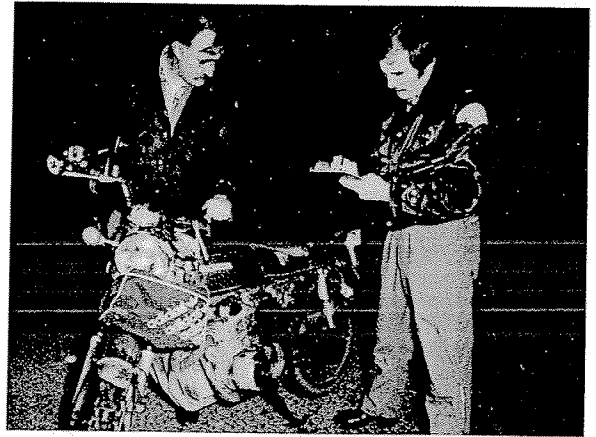
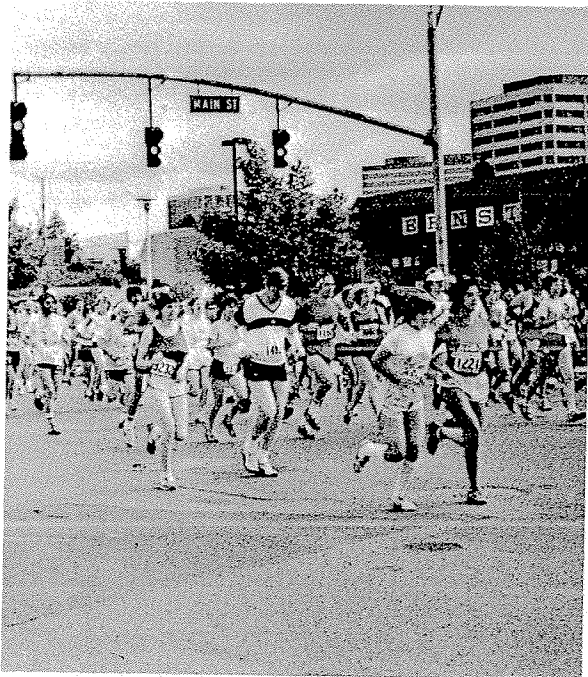
The Youth Services Detective is assigned to the Crime Prevention Unit, but works throughout the Operations Division. The officer reviews all juvenile cases for sufficiency and appropriate disposition, carries a caseload for follow-up investigation, and investigates all child abuse and neglect incidents.

Types of Offenses Crime Type	Juveniles Involved	
	1980	1981
Arson	11	4
Rape	0	1
Robbery	14	6
Assault	23	24
Burglary	153	80
Theft	122	101
Auto Theft (Incl. TMVWOOP)	40	11
Shoplift	245	259
Liquor Violation	149	270
Narcotics	46	36
Malicious Mischief	51	35
Other Criminal	123	133
Non-Criminal (Runaway, Abuse, etc.)	116	55
Total	1,083	1,015

Traffic

The Bellevue Police Traffic Section remains primarily responsible for the reduction of accidents and the safe and efficient flow of motor vehicle traffic within the City. Concurrent with this assignment, a comprehensive program of traffic safety education, selective enforcement, and high hazard data analysis continues. Despite City-wide traffic volumes which are increasing by 3% per year, along with the steady increase in total calls for service, the Traffic Section has continued to hold the line against motor vehicle accidents and injuries.

The duties of the hit and run investigator were expanded in 1981 to include assisting with on scene investigation of fatal and serious injury accidents and to further assist as needed to follow-up investigation of these accidents. This change in duty responsibility will be manifested in savings of both time and overtime costs.



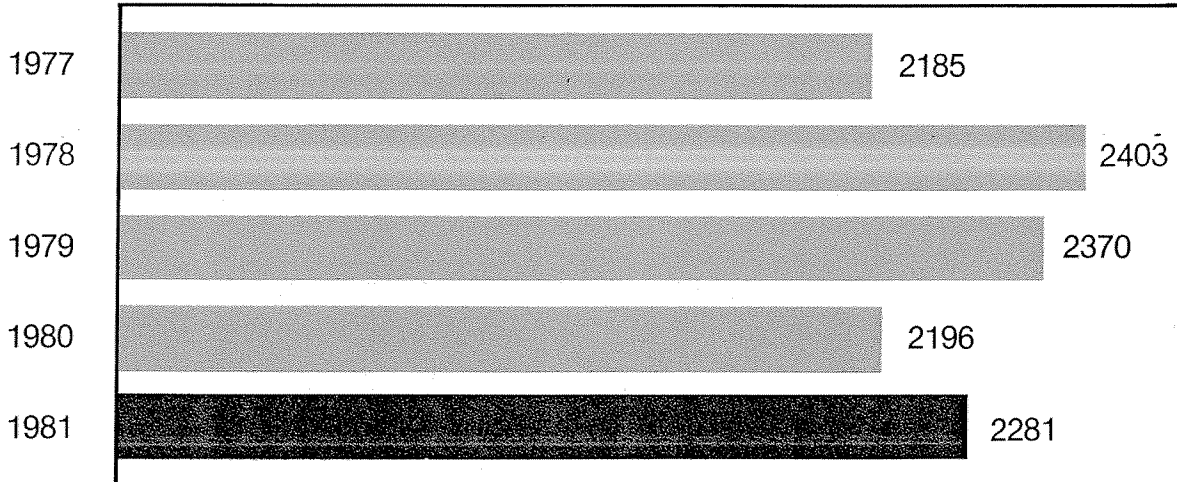
Planning and coordinating safety and special events continues to be a major aspect of Traffic Section duties. More than twenty events were handled in 1981 ranging from foot races involving several hundred participants, to the Bellevue Arts and Crafts Fair attended by 200,000 people.

Training in the areas of traffic safety and accident investigation has been of vital importance in this highly specialized field and to that end members of the Traffic Section received over 800 hours of schooling, an average of over 60 hours per officer. This emphasis on training helps to insure that the previously established high level of expertise shall continue.



Traffic Statistics

TRAFFIC ACCIDENTS



COMPARATIVE BREAKDOWN

	1980	1981	Change
Persons Injured	778	816	+ 5%
Pedestrian Accidents	43	28	- 35%
Bicycle Accidents	28	32	+ 14%
Traffic Fatalities	2	3	+ 50%
Hit & Run Accidents	520	542	+ 4%
Total Accidents	2,196	2,281	+ 4%

Hazardous Device Unit

The Hazardous Device Unit consists of four highly trained technicians experienced in identifying and dismantling bombs, and disposing of dangerous chemicals. 1981 was a relatively quiet year with the total number of explosive incidents 19% lower than 1980. Bomb threats to schools increased, but only to a level consistent with previous years.

Unusual for Bellevue were the two incendiary attacks on a local dry cleaning establishment (neither was successful). Two members of the unit assisted Redmond Police Department with the initial post blast investigation of an explosion at a State Liquor Store. One officer took the opportunity to receive refresher training at the prestigious Redstone Arsenal in Huntsville, Alabama.



	<u>1980</u>	<u>1981</u>
Total Explosive Related Incidents	77	62
Threats	30	33
Schools	4	11
Commercial	20	17
Public Agency	3	0
Other	3	5
Bombings	21	11
Explosive	21	9
Residential	18	8
Commercial	3	0
Public Agency	0	0
Other	0	1
Incendiary	0	2
Other Related	26	18
Found Explosive/Ordnance	21	15
Suspicious Packages	2	2
Dangerous Chemical	3	1

Planning/Personnel/Training

The Planning/Personnel/Training Unit is staffed by one Lieutenant and the department Training Officer. This unit is responsible for managing departmental training, maintaining personnel records, policy formulation and administration of the Field Training Officer Program. The unit also provides clothing and personal police equipment for commissioned personnel. Additionally, the unit supervisor has the responsibility of checking the background of all police officer applicants prior to hiring.

During 1981, the unit managed 6,400 hours of training (2,856 In-Service) for the department, with commissioned personnel receiving an average of 54.3 hours of training. Crowd Control Tactics training was initiated in 1981 for all line officers and all employees received training in Police-Asian Relations from an officer who was hired from Santa Ana, California Police Department through the department's lateral entry program for experienced officers.



In 1981, another less-than-lethal device was added to the department's "arsenal." The "Immobilizer" like the "Capture Net" introduced in 1980, is another alternative to the use of deadly force. This device may be applied in the field by two officers, and is designed to be used in the capture and restraint of violent/combative individuals who may be armed with less than a firearm. Two "Immobilizers" were purchased in August and the training of all Patrol Section personnel was completed by the end of October. Each Patrol supervisor's vehicle was then equipped with the "Immobilizer" for immediate deployment whenever the need may arise.

Training quality was maintained throughout the year with an increase in quantity, along with the hiring of 17 new police officers. 1981 was a productive training year and we are looking forward to 1982 with the addition of the Police/Fire Training Center.

Staff Support

Composed of four units, Records, Communications, Headquarters and Property Room, Staff Support performs a variety of functions essential to the effective operation of the department. This section is directed by a Captain.

The Records Unit consists of 15 full time clerks, 2 part time clerks, 3 clerks permanently assigned to Traffic, Patrol and Crime Prevention, and 3 supervisors. This unit is responsible for the processing, filing and security of crime reports and criminal history records.

The Headquarters Unit is staffed with three officers who are responsible for prisoner booking and detention, receiving crime reports, serving warrants and maintenance of department equipment.

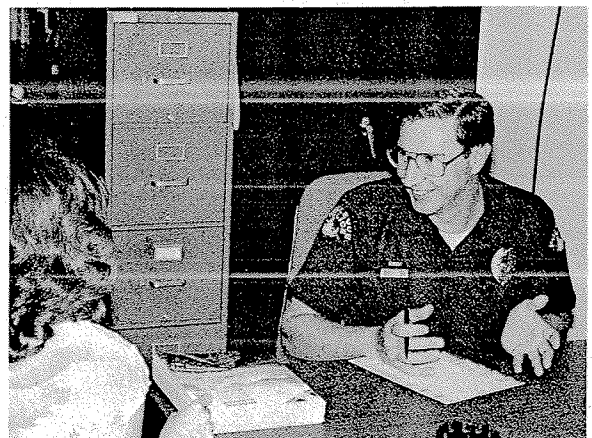
In 1981 Records and Headquarters Units handled:

- 92,095 Phone Calls
- 15,330 Cases Processed
- 3,873 Reports Initiated
- 739 Weapons Permits Issued
- 2,291 Individuals Fingerprinted

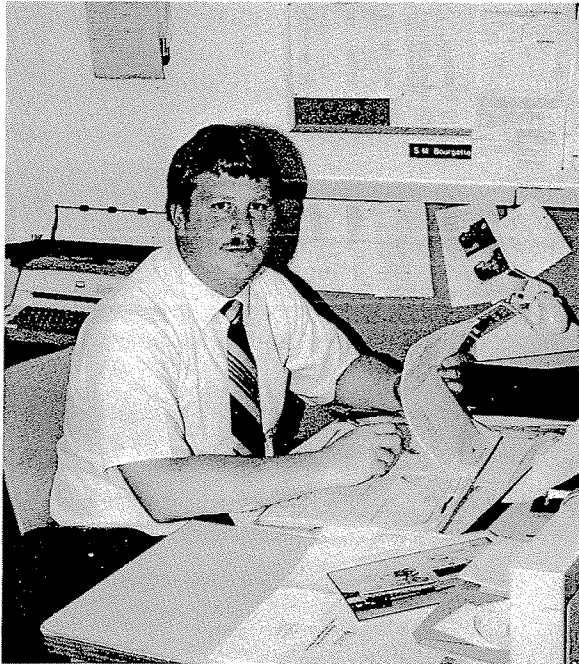


The Communications Unit consists of 1 Lieutenant, 3 supervisors and 13 dispatchers and is responsible for receiving emergency calls for police, fire and medical aid 24 hours a day and dispatching an appropriate response. The Unit dispatches for three police departments and five fire departments. In 1981 dispatchers received 23,299 calls for police service and 10,453 for fire and emergency medical service.

The Property Room Clerk is responsible for the receiving, recording, storing, disposition and security of evidence and found property. In 1981 2,692 entries were made and \$7,013 in revenue was received by the general fund from the sale of unclaimed property.



Employees of the Year



Detective Steve Bourgette was selected as 1981 Officer of the Year by his fellow officers. Steve has been with the Bellevue Police Department since 1975; he has worked in Patrol, Narcotics, and is currently assigned to the Detective Unit. Steve is both a seasoned Field Training Officer and Hostage Negotiator.

He is responsible for developing a Pawn Shop Detail and for creating a Coding System for entering, identifying, and retrieving stolen property. Steve is an outstanding officer and his award is well deserved.

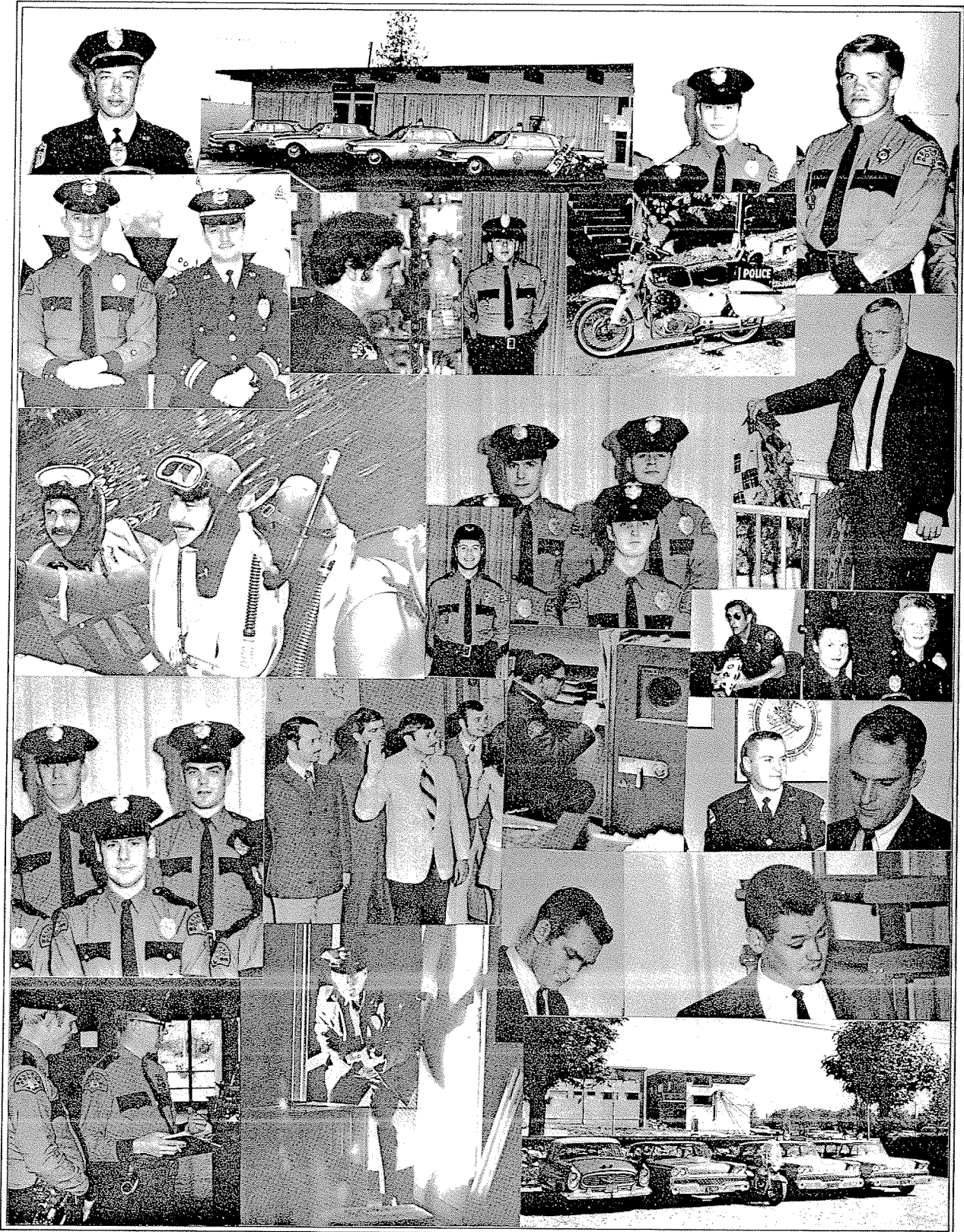


Helen Meyer has been a dispatcher with this department since December 1978. Prior to this she dispatched for a county fire district and was a relief dispatcher for Bellevue. Helen has been closely involved in developing our dispatcher training program and has spent considerable time actively training full time and relief dispatchers.



Kathleen Scurlock started work as a records clerk in May 1976. Kathleen is very knowledgeable in the functions of the Records Unit and the law enforcement computer system and is active in training new personnel. Kathleen is also trained in finger printing and provides this service to the public.

A Look Back



ANNUAL STAFF

Lt. Richard Sturza, Editor
Frank Anderson and Lt. Richard Sturza, Photographers
Lucretia Ericks, Graphics & Typesetting