

# **Bellevue Way SE HOV – 112<sup>th</sup> Ave SE ‘Y’ to South Bellevue P&R**

Staff Recommendation for project scope and phasing plan.

**March 9, 2017 – Transportation Commission**

---

**Presenters:**

**Marina Arakelyan, Project Manager, City of Bellevue**

**[Marakelyan@bellevuewa.gov](mailto:Marakelyan@bellevuewa.gov); ph. 425-452-4632**

**Justin Matthews, KPFF Consulting Engineers**

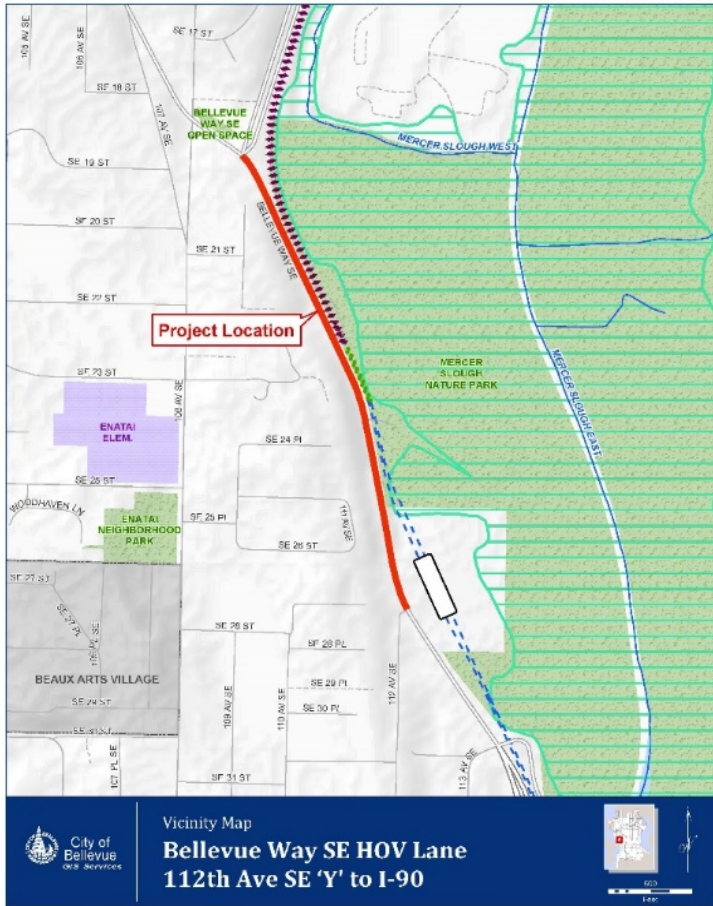


# Tonight's Purpose:

---

- Present staff's recommendations for project scope and phasing approach
- Staff is NOT presenting funding options at this time
- **Seek Transportation Commission's concurrence on project scope and phasing approach**
- Next steps

# Bellevue Way SE Southbound HOV Project



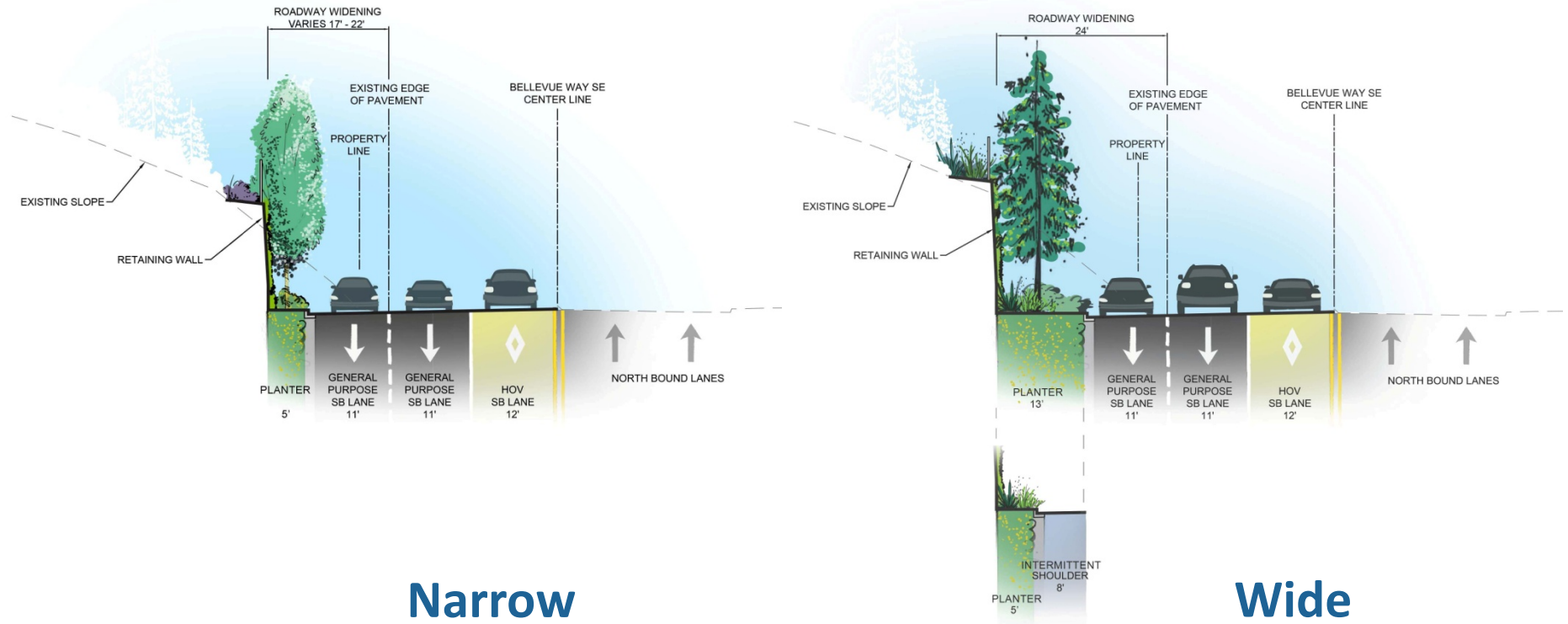
## 2017-2023 Council-adopted CIP plan:

- Develop design
- Environmental Documentation

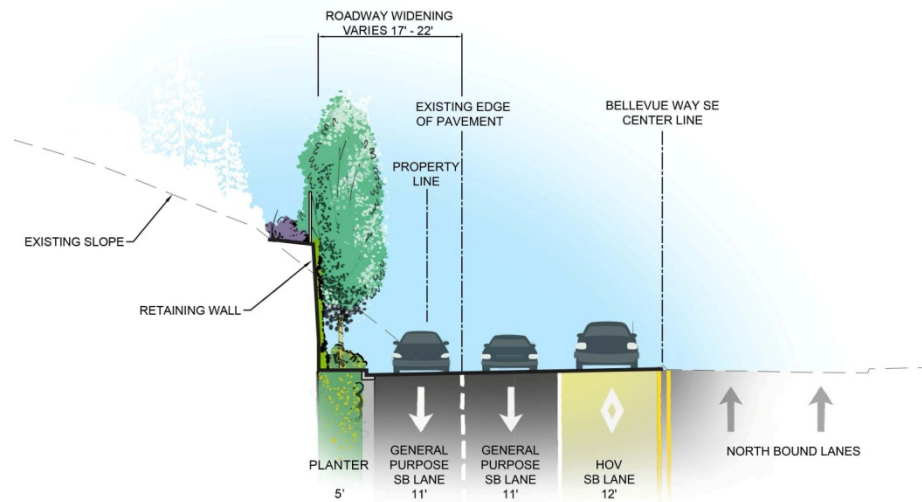
## Project Objectives:

- Reduce traffic congestion in PM peak
- Reduce delay in services for transit, carpool and vanpool
- Improve multi-modal access

# SB HOV Project Roadway Width: Narrow Section vs. Wide Section



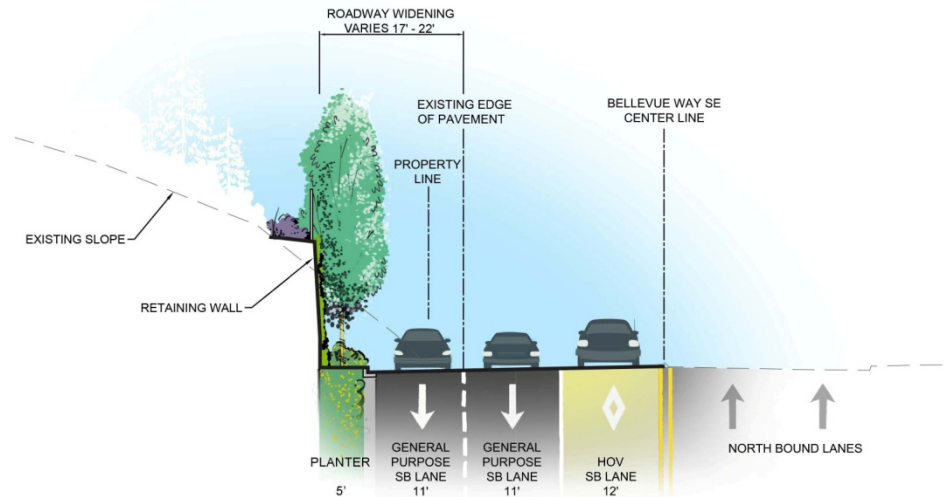
# SB HOV Project Roadway Width: Narrow Section – Staff Preferred Option



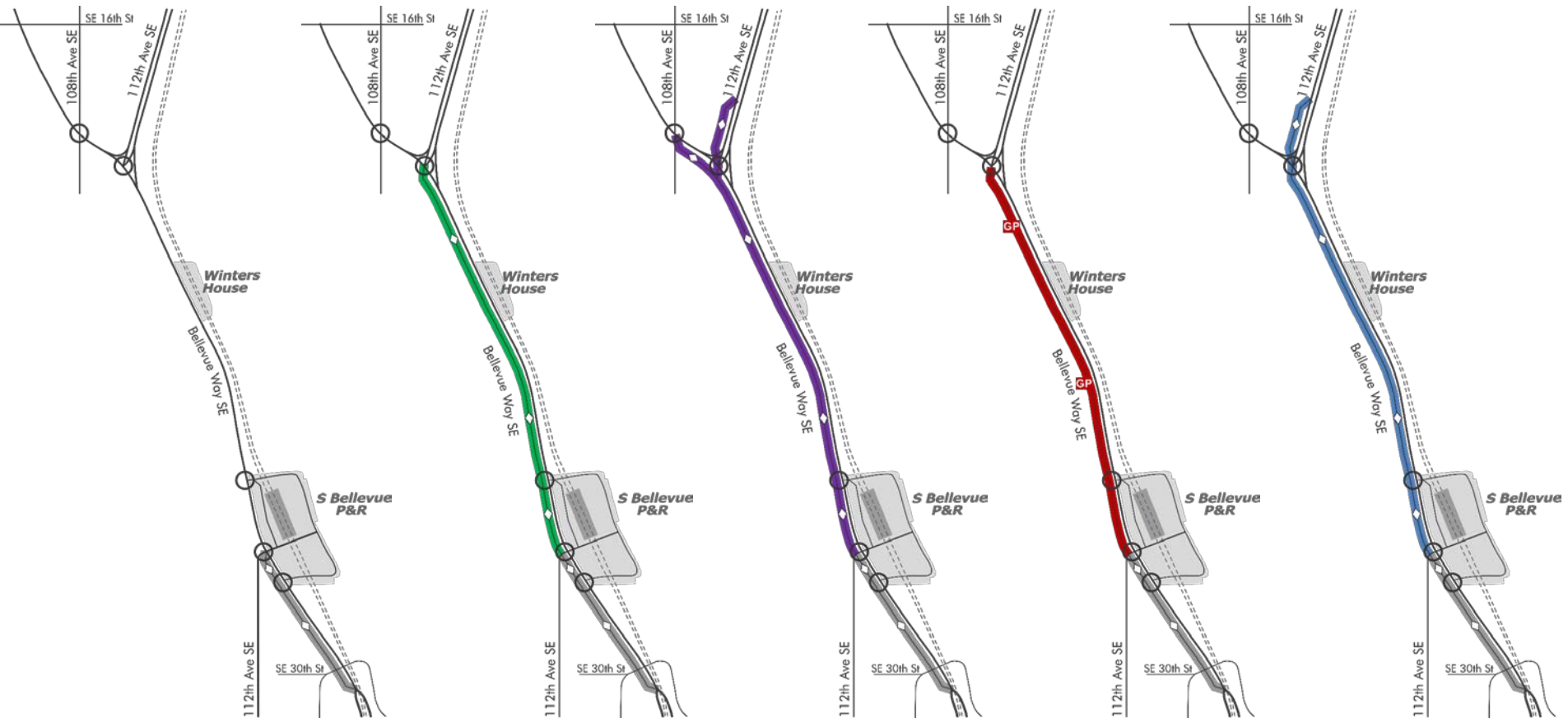
- Equivalent traffic operations performance
- Less Critical Area Impacts
- Less Private Property Impacts
- For full build project length, narrow section is \$9 million less than wide section.

# SB HOV Project Roadway Width: Narrow Section

Comments and questions on Staff recommendation for NARROW Project Roadway Width



# Traffic Study: Options Considered



**2030 No Build  
Baseline**

**Option 1**

**Option 2**

**Option 3**

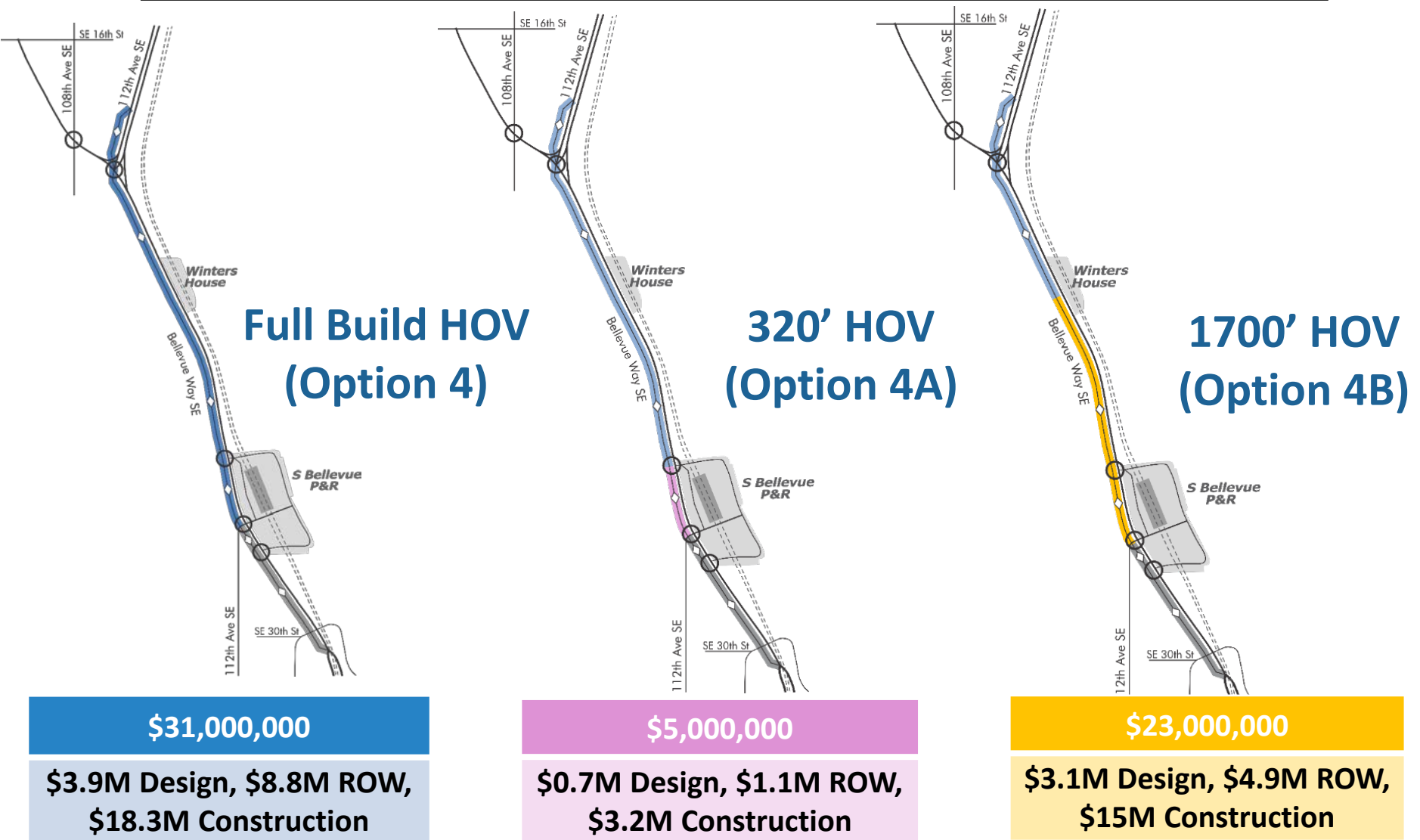
**Option 4**

# Traffic Study: Travel Time Savings

	2015 Existing Conditions	2030 No Build Baseline	Option 1: HOV to "Y"	Option 2: HOV through "Y"	Option 3: GP Lane to "Y"	Option 4: HOV through "Y" 112th Only
<b>Change in Travel Times (From Bellevue Way)</b>						
SOV	5.6 min	7.5 min	-0.2 min(-3%)	0.5 min(+7%)	2.4 min(+32%)	0.4 min(+5%)
HOV	5.6 min	7.2 min	-2.8 min (-39%)	-2.8 min(-39%)	2.2 min(+31%)	-2.5 min(-35%)
Transit	5.7 min	6.7 min	-2.0 min (-30%)	-2.3 min (-34%)	1.9 min(+28%)	-2.0 min(-30%)
<b>Change in Travel Times (From 112th Ave)</b>						
SOV	7.6 min	9.9 min	-0.2 min(-2%)	0.5 min(+5%)	2.6 min(+26%)	0.2 min(+2%)
HOV	7.6 min	9.5 min	-2.8 min(-29%)	-3.9 min(-41%)	2.3 min(+24%)	-4.5 min(-47%)
Transit	6.2 min	10.6 min	-3.0 min(-28%)	-3.6 min(-34%)	2.8 min(+26%)	-4.6 min(-43%)

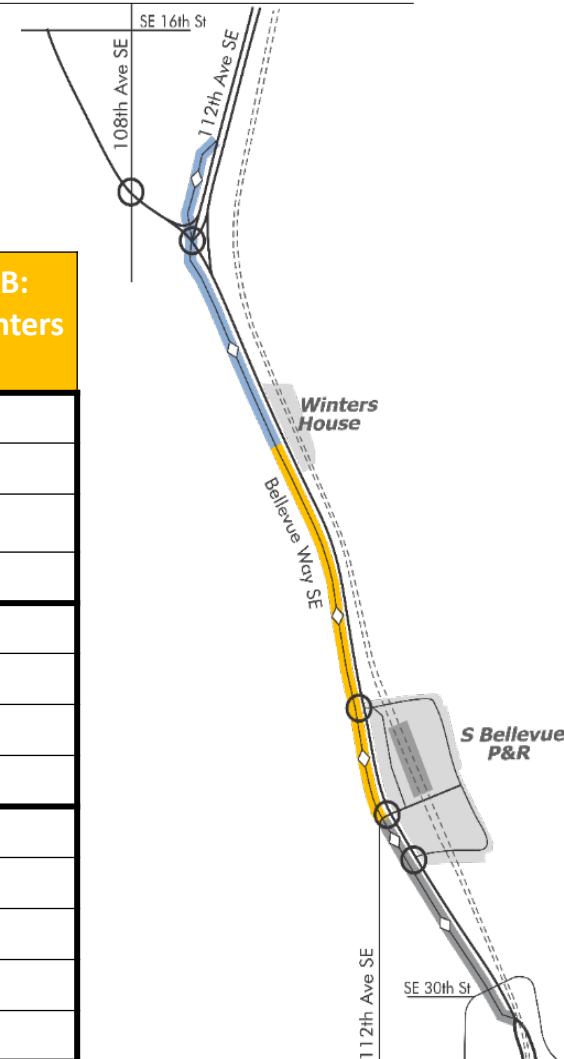


# Potential Phasing of Option 4 (narrow)



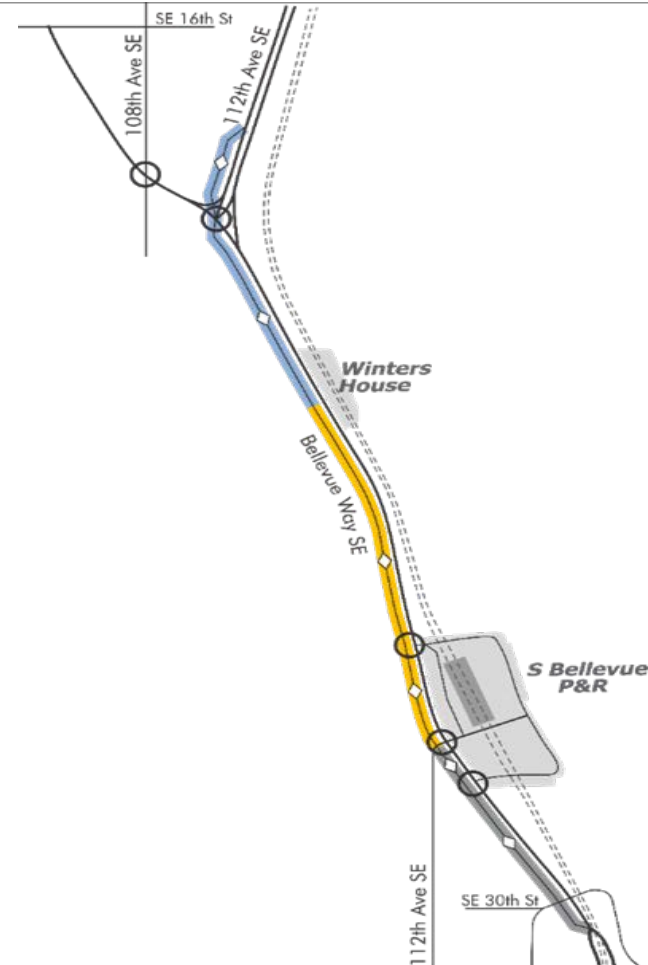
# Option 4B – Staff Preferred Phasing

	2030 No Build Baseline	Full Build Option 4: HOV through "Y" 112th Only	Phased Option 4B: 1700-ft HOV to Winters House
<b>Travel Times From Bellevue Way</b>			
SOV	7.5 min	7.9 min(+5%)	6.6 min(-12%)
HOV	7.2 min	4.7 min(-35%)	4.7 min(-35%)
Transit	6.7 min	4.7 min(-30%)	4.8 min(-28%)
<b>Travel Times From 112th Ave</b>			
SOV	9.9 min	10.1 min(+2%)	9.0 min(-9%)
HOV	9.5 min	5.0 min(-47%)	6.9 min(-27%)
Transit	10.6 min	6.0 min(-43%)	8.4 min(-21%)
<b>Peak Hour Volumes</b>			
Total Vehicles	2,163	2,462(+12%)	2,433(+11%)
Total People	3,876	4,490(+16%)	4,405(+14%)
# HOV Vehicles	194	457(+236%)	410(+211%)
# Transit Routes	20	20	20



# SB HOV Project Phasing: Phasing Option 4

Comments and  
questions on Staff  
recommendation for  
Phasing OPTION 4

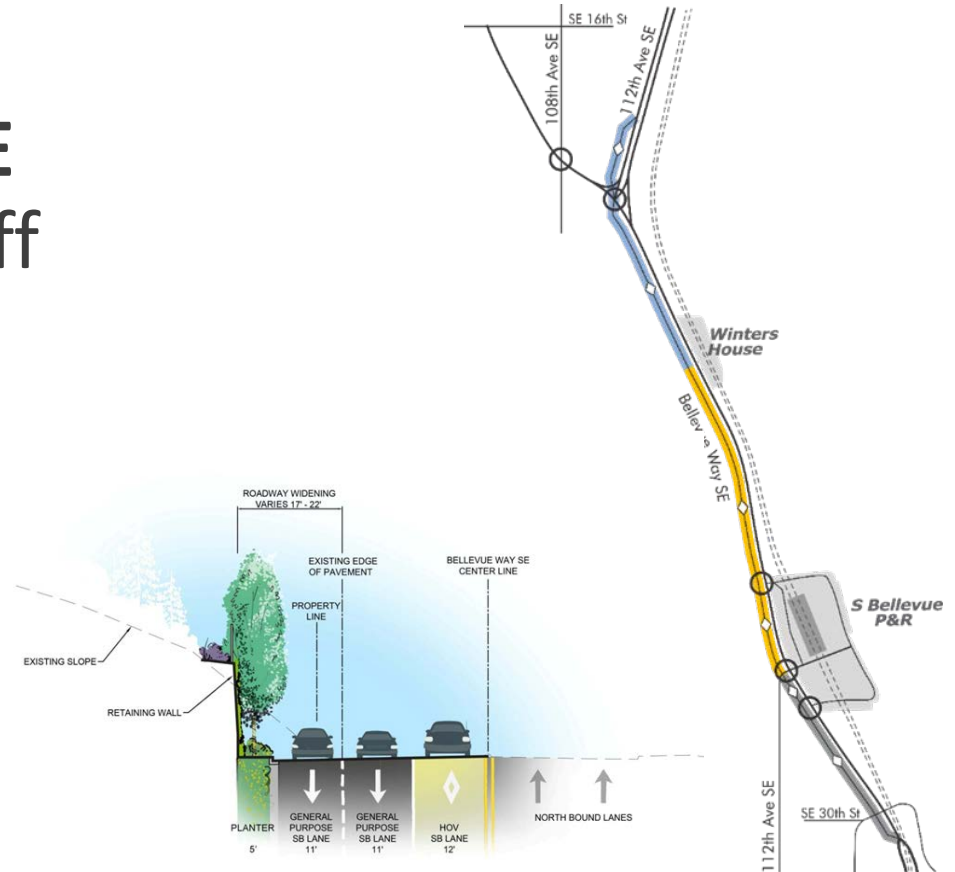


# Bellevue Way SE Southbound HOV Project

Motion to APPROVE  
concurrence with staff  
recommendation:

Width: NARROW option

Phasing: OPTION 4B



# Next Steps

---

- Seek City Council's approval of staff's recommendations for project scope and phasing approach
- At Council's direction, continue to proceed with the preparing Environmental Documentation and developing 60% design
- Continue working with community and stakeholders as design is advanced
- Continue to investigate funding options including grant opportunities and/or partnerships with other agencies

# Thank You!

---

## Contact Information:

Marina Arakelyan, project manager

[Marakelyan@bellevuewa.gov](mailto:Marakelyan@bellevuewa.gov);

ph. 425-452-4632